

## Table of Contents

<b>Spring 2017 Enrollment Highlights</b> .....	2
<b>Enrollment</b> .....	3
<b>Day vs. Evening Enrollment</b> .....	3
<b>Campus of Enrollment</b> .....	4
<b>FTE at the Lawrence Campuses</b> .....	4
<b>Instructional Method</b> .....	5
<b>Credit Enrollment</b> .....	6
<b>Student Status</b> .....	7
<b>Gender</b> .....	9
<b>Age</b> .....	9
<b>Ethnicity</b> .....	12
<b>Cities &amp; Towns of Residence</b> .....	15
<b>States of Residence</b> .....	15
<b>States of Residence – Online Students</b> .....	16
<b>Programs of Study</b> .....	18
<b>Enrollment by Program</b> .....	19
<b>Credits Generated by Discipline</b> .....	22

## Spring 2017 Enrollment Highlights

- Spring 2017 credit enrollment is 5,115, with a full-time equivalent (FTE) of 3,011. Headcount is down 9.5% and FTE is down 10.1% from Spring 2016.
- Enrollment decreased more over the past year in day classes (-11.2%) than evening (-7.2%) or online (-3.5%) classes.
- The headcount of full time students decreased more over the past year (-11.0%) than part time students (-8.7%).
- There was a modest one-year increase of new (0.7%) and transfer (5.2%) students, as opposed to decreases of continuing (-11.7%) and readmitted students (-9.1%).
  - Much of the gain in new and transfer students came from non-degree seeking new students (11.0% increase from Spring 2016) and non-degree seeking transfer students (31.4% increase from Spring 2016).
- There was a slightly larger loss of female students (-10.3%) than male students (-8.2%).
- There was a slightly larger loss of students older than 25 (-11.6%) than students 25 or younger (-8.4%).
- There was a small increase in enrollment of minority students (3.7%), versus a decrease of majority (-14.3%), Hispanic (-6.0%), Non-Resident Alien (-12.1%), and unknown (-2.9%).
  - “Minority” includes Asian, black, Hawaiian/Pacific Islander, Multi-Racial, and Native American students. Each of these specific groups increased, with the exception of Native Americans which had no change.
- Top 10 cities and towns of residence remain unchanged and account for 78.8% of enrollment
  1. Lawrence
  2. Haverhill
  3. Methuen
  4. Amesbury
  5. North Andover
  6. Salem NH
  7. Lowell
  8. Andover
  9. Newburyport
  10. Merrimac
- Top 10 programs of study account for 59.1% of enrollment
  1. General Studies: Health Specialization
  2. Liberal Arts
  3. Business Transfer
  4. Criminal Justice
  5. Business Management
  6. Engineering Science
  7. Liberal Arts: Psychology
  8. CIS: Information Technology
  9. CIS: Transfer Option
  10. Biology

## Northern Essex Community College Spring 2017 Enrollment Update

### Enrollment

There are 5,115 credit students attending Northern Essex Community College for the Spring 2017 semester, a decrease of -9.5% from Spring 2016. The full-time equivalent (FTE), defined as the total number of credit hours generated divided by 15, decreased by -10.1% this Spring.

**Table 1. Headcount & FTE**

	Spring 2012	Spring 2013	Spring 2014	Spring 2015	Spring 2016	Spring 2017	1-Year Change	5-Year Change
Student Headcount	6,812	6,906	6,522	6,263	5,649	5,115	-9.5%	-24.9%
Full-Time Equivalent (FTE)	4,067	4,116	3,895	3,649	3,348	3,011	-10.1%	-26.0%

### Day vs. Evening Enrollment

Individuals may be counted in multiple categories; therefore, the sum of headcounts in Table 2 exceeds the unduplicated student headcount in Table 1. The "Online" category refers only to 100% online courses.

**Table 2. Day, Evening & Online**

	Spring 2012	Spring 2013	Spring 2014	Spring 2015	Spring 2016	Spring 2017	1-Year Change	5-Year Change
Day Headcount	4,611	4,571	4,310	4,154	3,717	3,302	-11.2%	-19.4%
Day FTE	2,470	2,457	2,323	2,191	1,945	1,698	-12.7%	-21.3%
Evening Headcount	3,360	3,470	3,361	3,225	2,789	2,587	-7.2%	-17.0%
Evening FTE	1,189	1,226	1,178	1,066	931	860	-7.6%	-21.7%
Online Headcount	1,389	1,431	1,323	1,337	1,504	1,451	-3.5%	8.3%
Online FTE	408	433	395	392	472	453	-4.0%	15.8%

## Campus of Enrollment

Individual students may be counted in more than one campus category; therefore, the sum of Haverhill, Lawrence, Online and Other headcounts in Table 3 exceeds the unduplicated student headcount in Table 1. 100% online course headcounts are counted only in the “Online” category.

**Table 3. Enrollment by Campus**

	Spring 2012	Spring 2013	Spring 2014	Spring 2015	Spring 2016	Spring 2017	1-Year Change	5-Year Change
Haverhill Headcount	4,687	4,518	4,023	3,808	3,301	2,719	-17.6%	-42.0%
Haverhill FTE	2,340	2,283	2,032	1,882	1,597	1,288	-19.3%	-45.0%
Lawrence Headcount	2,704	2,849	3,041	2,902	2,752	2,532	-8.0%	-6.4%
Lawrence FTE	1,173	1,226	1,324	1,224	1,147	1,094	-4.6%	-6.7%
Online Headcount	1,389	1,431	1,323	1,337	1,504	1,451	-3.5%	4.5%
Online FTE	408	433	395	392	472	453	-4.0%	11.1%
Other Headcount	611	719	583	613	530	716	35.1%	17.2%
Other FTE	147	174	145	151	131	176	34.4%	20.1%
Lawrence Main Headcount	2,281	2,344	2,269	2,164	2,012	1,920	-4.6%	-15.8%
Lawrence Main FTE	965	980	869	819	737	719	-2.4%	-25.5%
Lawrence El-Hefni Health Headcount	0	0	275	417	410	657	60.2%	-
Lawrence El-Hefni Health FTE	0	0	112	157	143	230	60.8%	-
Lawrence 420 Common Street Headcount	0	0	366	224	242	147	-39.3%	-
Lawrence 420 Common Street FTE	0	0	119	79	90	53	-41.1%	-
Lawrence iHealth Headcount	152	251	531	439	413	0	-100.0%	-100.0%
Lawrence iHealth FTE	66	94	169	134	122	0	-100.0%	-100.0%
Lawrence River Walk Headcount	581	635	246	174	259	340	31.3%	-41.5%
Lawrence River Walk FTE	142	152	54	35	55	92	67.3%	-35.2%

## FTE at the Lawrence Campuses

Table 4 shows how the FTE is distributed between the Lawrence Campuses in Spring 2014 through Spring 2017. NECC ceased use of the iHealth building in 2016.

**Table 4. FTE at Lawrence Campuses**

	Spring 2014	% of FTE in Lawrence 2014	Spring 2015	% of FTE in Lawrence 2015	Spring 2016	% of FTE in Lawrence 2016	Spring 2017	% of FTE in Lawrence 2017
Lawrence FTE	1,324	100.0%	1,224	100.0%	1,147	100.0%	1,094	100.0%
Lawrence Main FTE	869	65.6%	819	66.9%	737	64.3%	719	65.7%
Lawrence El-Hefni Health FTE	112	8.5%	157	12.8%	143	12.5%	230	21.0%
Lawrence 420 Common Street FTE	119	9.0%	79	6.5%	90	7.8%	53	4.8%
Lawrence iHealth FTE	169	12.8%	134	11.0%	122	10.6%	0	0.0%
Lawrence River Walk FTE	54	4.1%	35	2.8%	55	4.8%	92	8.4%

## Instructional Method

Please note that NECC is in the process of transitioning all traditional classroom instruction into either Web-Enhanced or Web-Companion.

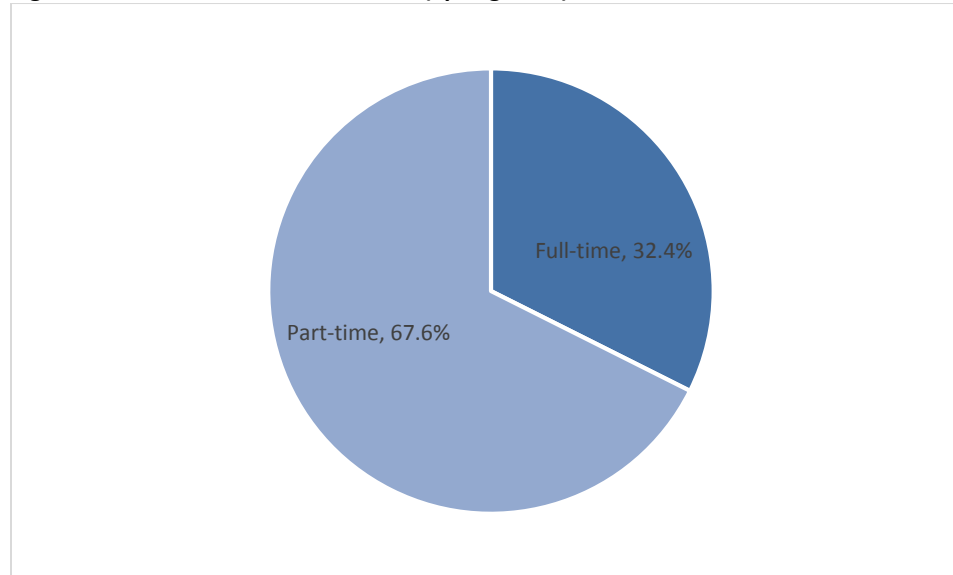
**Table 5. Enrollment by Instructional Method**

	Spring 2012		Spring 2013		Spring 2014		Spring 2015		Spring 2016		Spring 2017		1-Year Change	5-Year Change
	#	%	#	%	#	%	#	%	#	%	#	%		
Classroom Instruction	11,674	60.5%	7,015	36.2%	983	5.4%	691	4.0%	524	3.4%	483	3.4%	-7.8%	-95.9%
Web Companion	2,955	15.3%	7,635	39.4%	9,868	53.7%	8,672	50.8%	7,339	46.9%	5,998	42.8%	-18.3%	103.0%
Web Enhanced	1,458	7.6%	1,438	7.4%	3,842	20.9%	4,193	24.6%	4,100	26.2%	4,066	29.0%	-0.8%	178.9%
Web Hybrid – 50% Online	1,177	6.1%	1,170	6.0%	1,742	9.5%	1,538	9.0%	1,374	8.8%	1,185	8.5%	-13.8%	0.7%
Web Online – 100% Online	2,028	10.5%	2,124	11.0%	1,916	10.4%	1,888	11.1%	2,303	14.7%	2,210	15.8%	-4.0%	9.0%
Individual Instruction	-	-	-	-	17	0.1%	82	0.5%	-	-	-	-		
Competency Based Education	-	-	-	-	-	-	-	-	-	-	73	0.5%		
Total Seats	19,292		19,382		18,368		17,064		15,640		14,015		-10.4%	-27.4%

## Credit Enrollment

Part-time students are those enrolled in 11 or fewer credits. Full-time students are enrolled in 12 or more credits.

**Figure 1. Full and Part Time Students (Spring 2017)**



**Table 6. Full and Part Time Students**

	Spring 2012		Spring 2013		Spring 2014		Spring 2015		Spring 2016		Spring 2017		1-Year Change	5-Year Change
	#	%	#	%	#	%	#	%	#	%	#	%		
Full-Time	2,254	33.1%	2,293	33.2%	2,166	33.2%	1,958	31.3%	1,860	32.9%	1,655	32.4%	-11.0%	-26.6%
Part-Time	4,558	66.9%	4,613	66.8%	4,356	66.8%	4,305	68.7%	3,789	67.1%	3,460	67.6%	-8.7%	-24.1%

## Student Status

Figure 2. Student Status (Spring 2017)

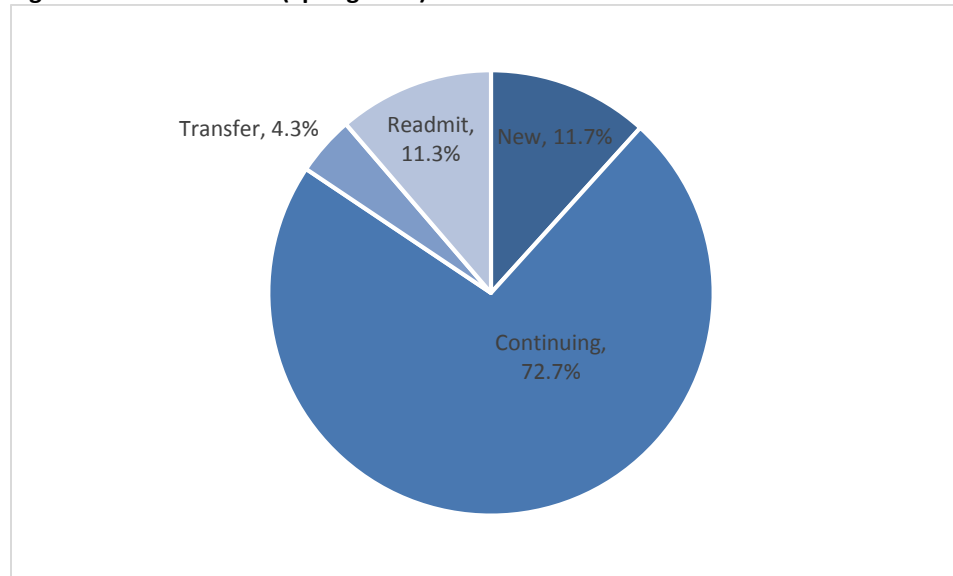


Table 7. Student Status

	Spring 2012		Spring 2013		Spring 2014		Spring 2015		Spring 2016		Spring 2017		1-Year Change	5-Year Change
	#	%	#	%	#	%	#	%	#	%	#	%		
New	637	9.4%	758	11.0%	716	11.0%	742	11.8%	593	10.5%	597	11.7%	0.7%	-6.3%
Continuing	4,933	72.4%	5,001	72.4%	4,739	72.7%	4,560	72.8%	4,212	74.6%	3,721	72.7%	-11.7%	-24.6%
Transfer	278	4.1%	288	4.2%	299	4.6%	269	4.3%	210	3.7%	221	4.3%	5.2%	-20.5%
Readmit	964	14.2%	859	12.4%	768	11.8%	692	11.0%	634	11.2%	576	11.3%	-9.1%	-40.2%
Other	0	0.0%	0	0.0%	0	0.0%	0	0.0%	0	0.0%	0	0.0%	-	-

Table 8 shows the distribution of degree seeking and non-degree seeking students by student status. “Degree-seeking” refers to all students enrolled in a major at NECC, including certificates.

**Table 8. Student Status and Degree Seeking Status**

Degree Seeking	Spring 2012		Spring 2013		Spring 2014		Spring 2015		Spring 2016		Spring 2017		1-Year Change	5-Year Change
	#	%	#	%	#	%	#	%	#	%	#	%		
New	472	6.9%	470	6.8%	423	6.5%	413	6.6%	321	5.7%	295	5.8%	-8.1%	-37.5%
Continuing	4,705	69.1%	4,855	70.3%	4,622	70.9%	4,415	70.5%	4,064	71.9%	3,641	71.2%	-10.4%	-22.6%
Transfer	218	3.2%	226	3.3%	246	3.8%	235	3.8%	175	3.1%	175	3.4%	0.0%	-19.7%
Readmit	785	11.5%	728	10.5%	648	9.9%	603	9.6%	541	9.6%	494	9.7%	-8.7%	-37.1%
Other	0	0.0%	0	0.0%	0	0.0%	0	0.0%	0	0.0%	0	0.0%	-	-
<b>Non-Degree Seeking</b>														
New	165	2.4%	288	4.2%	293	4.5%	329	5.3%	272	4.8%	302	5.9%	11.0%	83.0%
Continuing	228	3.3%	146	2.1%	117	1.8%	145	2.3%	148	2.6%	80	1.6%	-45.9%	-64.9%
Transfer	60	0.9%	62	0.9%	53	0.8%	34	0.5%	35	0.6%	46	0.9%	31.4%	-23.3%
Readmit	179	2.6%	131	1.9%	120	1.8%	89	1.4%	93	1.6%	82	1.6%	-11.8%	-54.2%
Other	0	0.0%	0	0.0%	0	0.0%	0	0.0%	0	0.0%	0	0.0%	-	-



## Gender

Figure 3. Gender (Spring 2017)

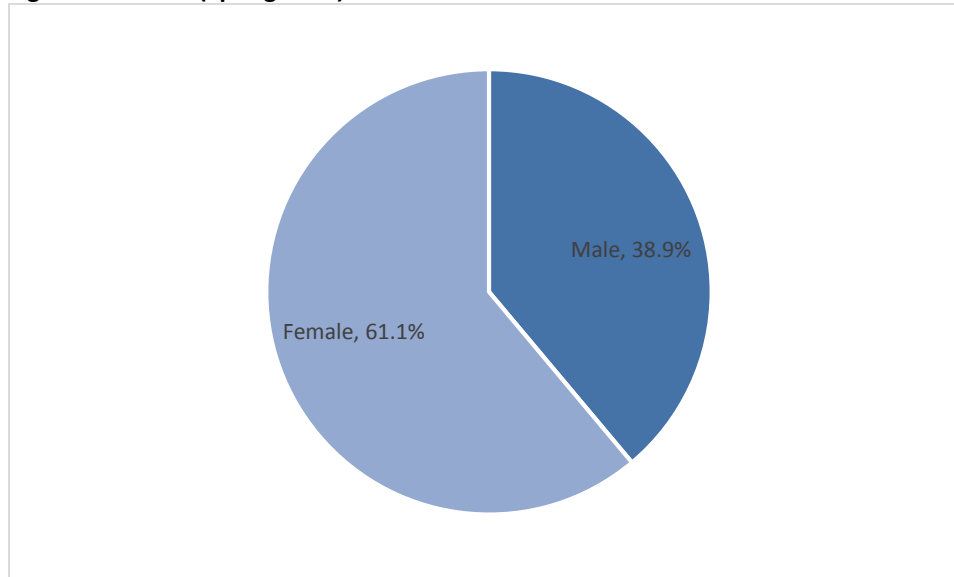


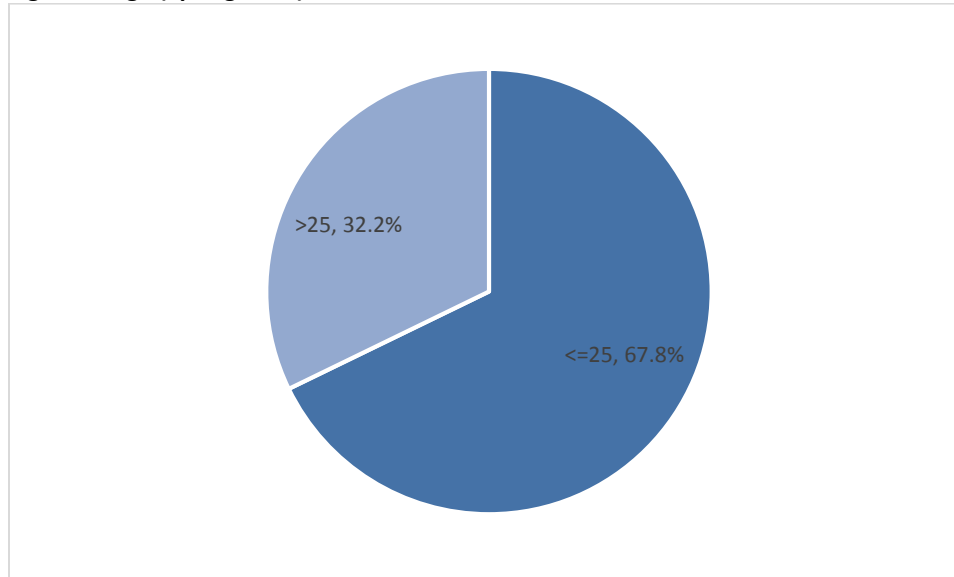
Table 9. Gender

	Spring 2012		Spring 2013		Spring 2014		Spring 2015		Spring 2016		Spring 2017		1-Year Change	5-Year Change
	#	%	#	%	#	%	#	%	#	%	#	%		
Male	2,535	37.2%	2,585	37.4%	2,477	38.0%	2,399	38.3%	2,169	38.4%	1,992	38.9%	-8.2%	-21.4%
Female	4,277	62.8%	4,321	62.6%	4,045	62.0%	3,864	61.7%	3,480	61.6%	3,123	61.1%	-10.3%	-27.0%

## Age

Students' reported ages are as of NECC's freeze date (the end of the add/drop period).

**Figure 4. Age (Spring 2017)**



**Table 10. Age**

	Spring 2012		Spring 2013		Spring 2014		Spring 2015		Spring 2016		Spring 2017		1-Year Change	5-Year Change
	#	%	#	%	#	%	#	%	#	%	#	%		
<=25	4,250	62.4%	4,348	63.0%	4,289	65.8%	4,179	66.7%	3,788	67.1%	3,469	67.8%	-8.4%	-18.4%
>25	2,560	37.6%	2,558	37.0%	2,233	34.2%	2,084	33.3%	1,861	32.9%	1,646	32.2%	-11.6%	-35.7%
Unknown/Missing	2	0.0%	0	0.0%	0	0.0%	0	0.0%	0	0.0%	0	0.0%	-	-100.0%

In Spring 2017, NECC students' ages ranged from 15 to 73. Such a wide range may skew the mean (average) age, so the median (middle) and mode (most common) ages are reported in Table 11. Also see Figure 5, which is a histogram showing the distribution of age among NECC students.

**Table 11. Age Averages**

	Spring 2012	Spring 2013	Spring 2014	Spring 2015	Spring 2016	Spring 2017
Mean	27	27	26	26	25	25
Median	23	23	22	22	22	22
Mode	20	19	19	19	19	19

Figure 5. Age Histogram (Spring 2017)

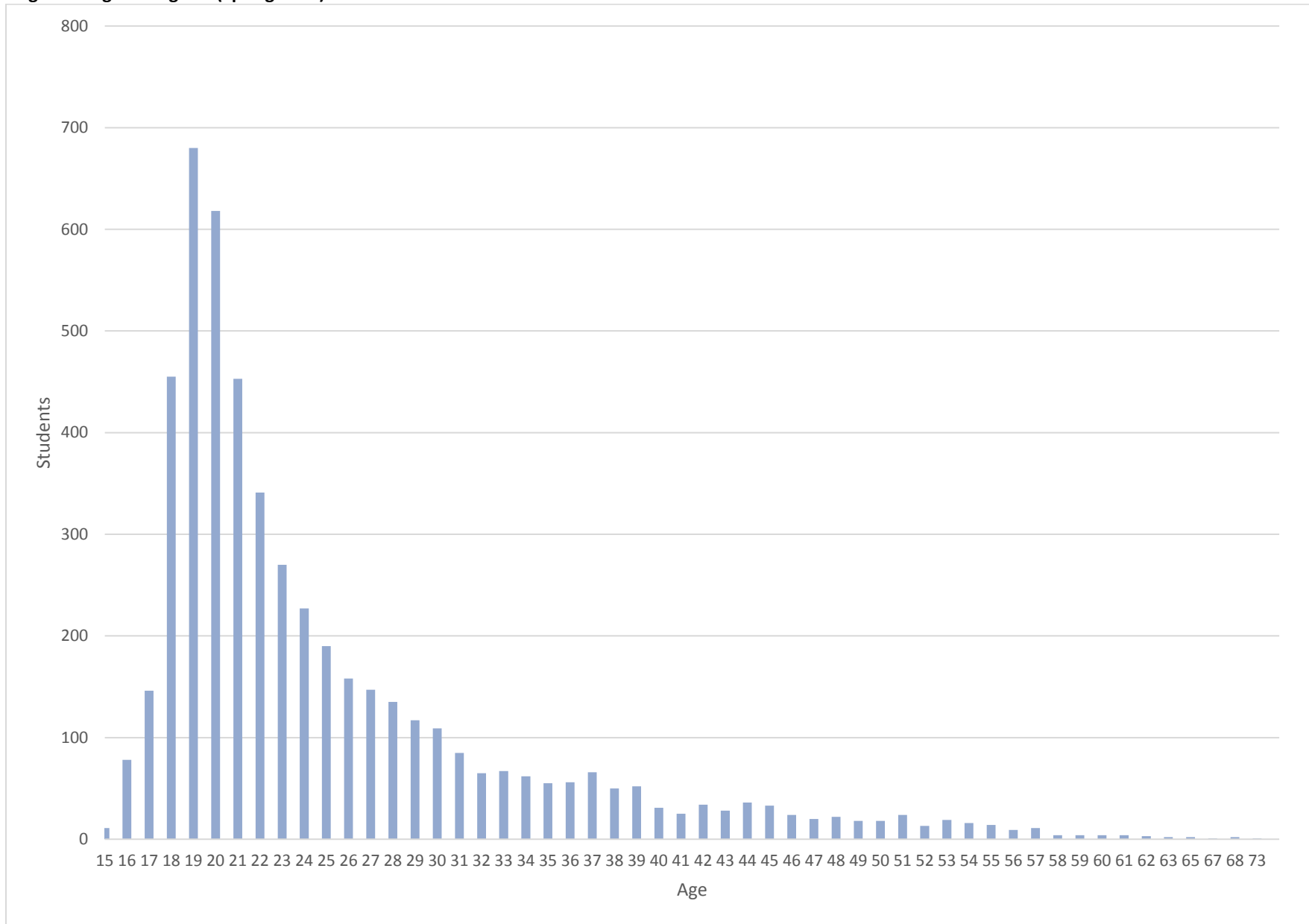


Table 12 shows the mean, median, and mode for age by campus in Spring 2017.

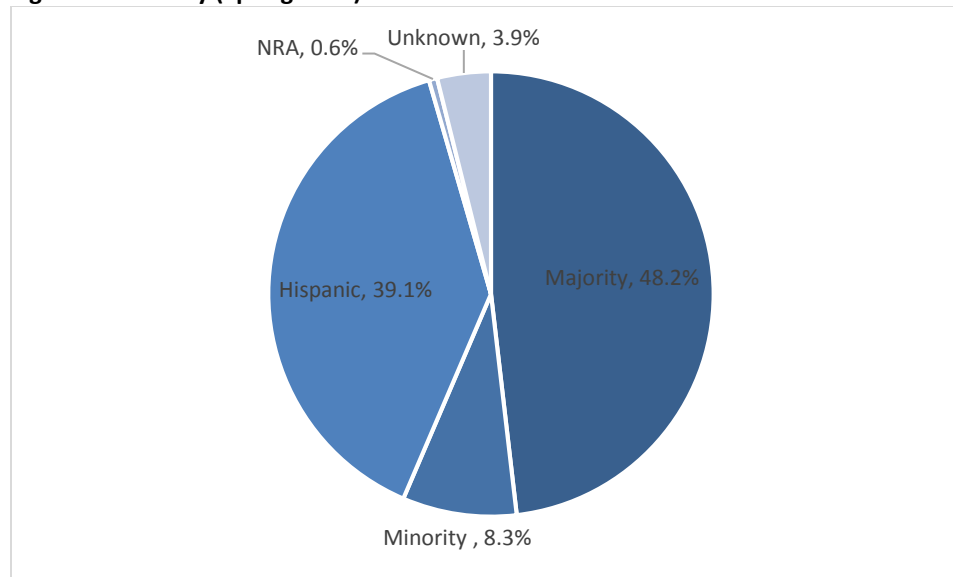
**Table 12. Age Averages by Campus**

	NECC Wide	Haverhill	Lawrence	Lawrence Main	Lawrence El-Hefni	Lawrence iHealth	Lawrence River Walk	Lawrence Common St	WEBON	Other
Mean	25	25	26	25	28	-	28	25	26	25
Median	22	22	23	22	25	-	23	21	23	22
Mode	19	19	19	19	19	-	19	20	19	17

## Ethnicity

“Majority” includes students who identify as White, non-Hispanic. “Minority” includes students who identify as African-American/Black, Asian, Cape Verdean, Native Hawaiian/Pacific Islander, American Indian/Alaskan Native or Multi-Racial.

**Figure 6. Ethnicity (Spring 2017)**



**Table 13. Ethnicity**

	Spring 2012		Spring 2013		Spring 2014		Spring 2015		Spring 2016		Spring 2017		1-Year Change	5-Year Change
	#	%	#	%	#	%	#	%	#	%	#	%		
Majority	3,894	57.2%	3,837	55.6%	3,392	52.0%	3,194	51.0%	2,878	50.9%	2,466	48.2%	-14.3%	-36.7%
Minority	479	7.0%	459	6.6%	485	7.4%	454	7.2%	407	7.2%	422	8.3%	3.7%	-11.9%
Hispanic	2,181	32.0%	2,368	34.3%	2,381	36.5%	2,323	37.1%	2,127	37.7%	2,000	39.1%	-6.0%	-8.3%
Non-Resident Alien	46	0.7%	43	0.6%	40	0.6%	30	0.5%	33	0.6%	29	0.6%	-12.1%	-37.0%
Unknown	212	3.1%	199	2.9%	224	3.4%	262	4.2%	204	3.6%	198	3.9%	-2.9%	-6.6%

Table 14 displays enrollment by race.

**Table 14. Race**

	Spring 2012		Spring 2013		Spring 2014		Spring 2015		Spring 2016		Spring 2017		1-Year Change	5-Year Change
	#	%	#	%	#	%	#	%	#	%	#	%		
Asian	83	1.2%	97	1.4%	114	1.7%	120	1.9%	118	2.1%	123	2.4%	4.2%	48.2%
Black, non-Hispanic	256	3.8%	241	3.5%	241	3.7%	225	3.6%	207	3.7%	216	4.2%	4.3%	-15.6%
Hawaiian/Pacific Islander	55	0.8%	37	0.5%	35	0.5%	28	0.4%	17	0.3%	17	0.3%	0.0%	-69.1%
Hispanic	2,181	32.0%	2,368	34.3%	2,381	36.5%	2,323	37.1%	2,127	37.7%	2,000	39.1%	-6.0%	-8.3%
Multi-Racial	69	1.0%	75	1.1%	87	1.3%	70	1.1%	56	1.0%	57	1.1%	1.8%	-17.4%
Native American	16	0.2%	9	0.1%	8	0.1%	11	0.2%	9	0.2%	9	0.2%	0.0%	-43.8%
Non-Resident Alien	46	0.7%	43	0.6%	40	0.6%	30	0.5%	33	0.6%	29	0.6%	-12.1%	-37.0%
White, non-Hispanic	3,894	57.2%	3,837	55.6%	3,392	52.0%	3,194	51.0%	2,878	50.9%	2,466	48.2%	-14.3%	-36.7%
Unknown	212	3.1%	199	2.9%	224	3.4%	262	4.2%	204	3.6%	198	3.9%	-2.9%	-6.6%

Table 15 presents ethnicity by campus. Only Spring 2017 data is shown below. For total headcount by campus of enrollment, please refer to Table 3.

**Table 15. Ethnicity by Campus (Spring 2017)**

	NECC Wide		Haverhill		Lawrence Main		Lawrence El-Hefni		Lawrence iHealth		Lawrence River Walk		Lawrence Common St		WEBON		Other	
	#	%	#	%	#	%	#	%	#	%	#	%	#	%	#	%	#	%
Majority	2,466	48.2%	1,604	59.0%	550	28.6%	302	46.0%	0	-	131	38.5%	35	23.8%	835	57.5%	376	52.5%
Minority	422	8.2%	235	8.6%	155	8.1%	61	9.2%	0	-	22	6.5%	12	8.1%	105	7.2%	49	6.8%
Hispanic	2,000	39.1%	804	29.6%	1,171	61.0%	282	42.9%	0	-	181	53.2%	97	66.0%	471	32.5%	198	27.7%
NRA	29	0.6%	16	0.6%	13	0.7%	6	0.9%	0	-	2	0.6%	2	1.4%	4	0.3%	7	1.0%
Unknown	198	3.9%	60	2.2%	31	1.6%	6	0.9%	0	-	4	1.2%	1	0.7%	36	2.5%	86	12.0%

Table 16 displays the headcount for each campus by race.

**Table 16. Race by Campus (Spring 2017)**

	NECC Wide		Haverhill		Lawrence Main		Lawrence El-Hefni		Lawrence iHealth		Lawrence River Walk		Lawrence Common St		WEBON		Other	
	#	%	#	%	#	%	#	%	#	%	#	%	#	%	#	%	#	%
Asian	123	2.4%	69	2.5%	42	2.2%	18	2.7%	0	-	4	1.2%	6	4.1%	30	2.1%	21	2.9%
Black, non-Hispanic	216	4.2%	108	4.0%	88	4.6%	37	5.6%	0	-	12	3.5%	3	2.0%	57	4.0%	23	3.2%
Hawaiian/ Pacific Islander	17	0.3%	9	0.3%	9	0.5%	2	0.3%	0	-	0	0.0%	1	0.7%	1	0.1%	0	0.0%
Hispanic	2,000	39.1%	804	29.6%	1,171	61.0%	282	42.9%	0	-	181	53.2%	97	66.0%	471	32.5%	198	27.7%
Multi-Racial	57	1.1%	41	1.5%	15	0.8%	4	0.6%	0	-	6	1.8%	2	1.4%	17	1.2%	4	0.6%
Native American	9	0.2%	8	0.3%	1	0.1%	0	0.0%	0	-	0	0.0%	0	0.0%	0	0.0%	1	0.1%
NRA	29	0.6%	16	0.6%	13	0.7%	6	0.9%	0	-	2	0.6%	2	1.4%	4	0.3%	7	1.0%
White	2,466	48.2%	1,604	59.0%	550	28.6%	302	46.0%	0	-	131	38.5%	35	23.8%	835	57.5%	376	52.5%
Unknown	198	3.9%	60	2.2%	31	1.6%	6	0.9%	0	-	4	1.2%	1	0.7%	36	2.5%	86	12.0%

## Cities & Towns of Residence

Table 17 shows the top 10 cities and towns of residence, which account for 78.8% of NECC's Spring 2017 student population.

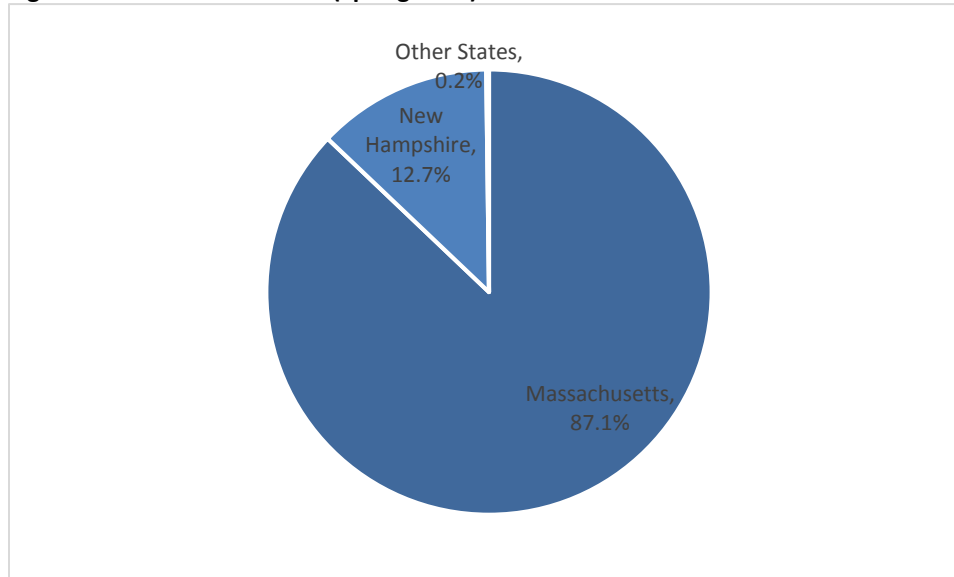
**Table 17. Top 10 Cities & Towns**

	Spring 2012	Spring 2013	Spring 2014	Spring 2015	Spring 2016	Spring 2017		1-Yr Change	5-Yr Change
1 Lawrence	1,718	1,883	1,895	1,810	1,692	1,481	29.0%	-12.5%	-13.8%
2 Haverhill (plus Bradford)	1,304	1,289	1,225	1,200	1,030	938	18.3%	-8.9%	-28.1%
3 Methuen	828	846	783	755	726	669	13.1%	-7.9%	-19.2%
4 Amesbury	269	275	223	251	212	220	4.3%	3.8%	-18.2%
5 North Andover	257	256	225	187	176	173	3.4%	-1.7%	-32.7%
6 Salem, NH	217	221	231	224	189	167	3.3%	-11.6%	-23.0%
7 Lowell	129	141	132	120	122	119	2.3%	-2.5%	-7.8%
8 Andover	143	153	127	124	94	97	1.9%	3.2%	-32.2%
9 Newburyport	119	110	111	86	87	89	1.7%	2.3%	-25.2%
10 Merrimac, MA	103	99	95	106	84	77	1.5%	-8.3%	-25.2%
All Other Municipalities	1,725	1,633	1,475	1,400	1,237	1,085	21.2%	-12.3%	-37.1%

## States of Residence

Figure 7 and Table 18 show the state of residence of NECC's Spring 2017 student population. Most of NECC students claim Massachusetts as their state of residence, and New Hampshire ranks second in this category. Other states of residence in Spring 2017 are: Maine, Connecticut, Rhode Island, and Utah.

**Figure 7. States of Residence (Spring 2017)**



**Table 18. States of Residence**

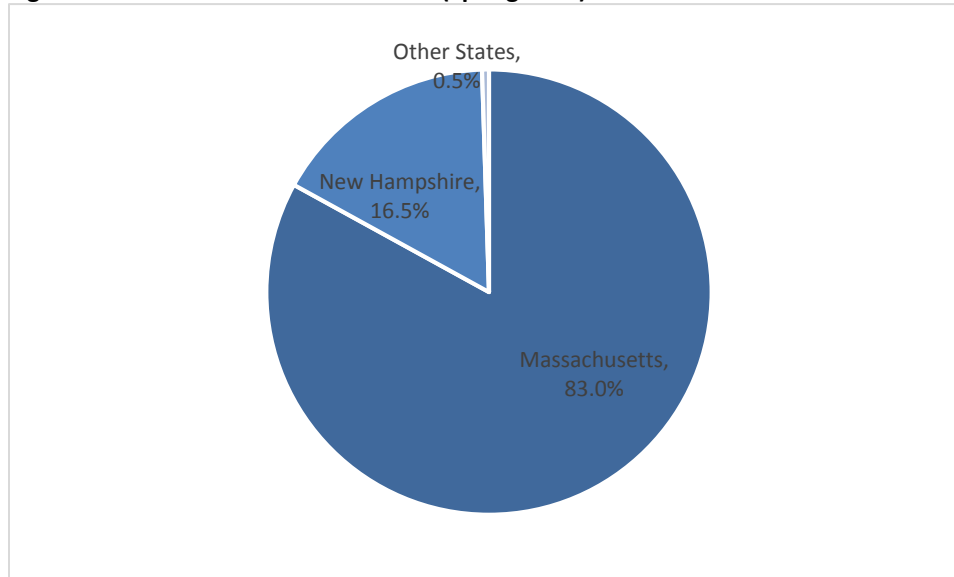
	Spring 2012	Spring 2013	Spring 2014	Spring 2015	Spring 2016	Spring 2017	1-Yr Change	5-Yr Change
Massachusetts	5,729	5,853	5,561	5,362	4,894	4,455	87.1%	-9.0%
New Hampshire	1,072	1,034	945	892	741	650	12.7%	-12.3%
Other States	11	19	16	9	14	10	0.2%	-28.6%

**States of Residence – Online Students**

Table 19 shows the state residence of NECC’s Spring 2017 students who took at least one 100% online course.



**Figure 8. Residence of Online Students (Spring 2017)**



**Table 19. Residence of Online Students**

	Spring 2012	Spring 2013	Spring 2014	Spring 2015	Spring 2016	Spring 2017		1-Yr Change	5-Yr Change
Massachusetts	1,119	1,148	1,062	1,098	1,245	1,204	83.0%	-3.3%	7.6%
New Hampshire	263	273	250	237	252	239	16.5%	-5.2%	-9.1%
Other States	7	10	11	2	7	8	0.5%	14.3%	14.3%

## Programs of Study

The 10 largest programs of study (excluding Unclassified programs), as displayed in Table 20, account for 59.1% of NECC's Spring 2017 enrollment.

**Table 20. Top 10 Programs**

Major	Major Code	Spring 2012	Spring 2013	Spring 2014	Spring 2015	Spring 2016	Spring 2017	1-Yr Change	5-Yr Change
1 General Studies: Health Specialization	8107	0	671	972	1,177	1,047	938	-10.4%	-
2 Liberal Arts	0100	373	404	330	496	532	479	-10.0%	28.4%
3 Business Transfer	0311	384	391	339	334	380	350	-7.9%	-8.9%
4 Criminal Justice	0200	346	334	359	362	288	233	-19.1%	-32.7%
5 Business Management	0308	244	254	264	292	264	223	-15.5%	-8.6%
6 Engineering Science	0507	185	220	218	226	225	213	-5.3%	15.1%
7 LA: Psychology	0137	199	198	170	191	182	175	-3.8%	-12.1%
8 CIS: Information Technology	0559	161	158	132	159	157	142	-9.6%	-11.8%
9 CIS: Transfer Option	0565	-	52	74	94	134	141	5.2%	-
10 Biology	0136	-	-	-	-	85	127	49.4%	-

## Enrollment by Program

Table 21 provides a complete, alphabetical list of programs and the number of students enrolled as of NECC's freeze date.

**Table 21. Enrollment by Program (Spring 2017)**

Major Code	Major	Spring 2017
0300	Accounting	91
0575	Adv Manuf Prec Machining Cert	1
0217	Alcohol Drug Abuse Counseling	41
0381	Automotive Technology Cert	2
0136	Biology	127
0372	Bus Mgt: Computer Applications	20
8102	Bus Mgt: Healthcare Practice	58
0343	Bus Mgt: Hospitality Option	13
0308	Business Management	223
0311	Business Transfer	350
0563	CIS: Applications Option	22
0559	CIS: Information Technology	142
0565	CIS: Transfer Option	141
0294	Community Health Worker Cert	2
0262	Community Support Human Svcs	29
0257	Computed Tomography (CT) Cert	9
0521	Computer Aided Drafting	6
0535	Computer Applications Cert	5
0564	Computer Forensics Basic Cert	1
0544	Computer Networking Cert	13
0567	Computer Security Cert	5
0200	Criminal Justice	233
0155	Dance Education Cert	2
0267	Deaf Studies	9
0268	Deaf Studies Cert	3
0218	Dental Assisting	22
0662	Direct Support Cert	1
0663	Direct Support Cert	5
0266	DS: Interpreting Transfer	16
0201	Early Childhood Education	126
8108	Elec Health Record Spec Cert	3

0529	Electronic Equipment Tech Cert	3
0506	Electronic Technology	1
0147	Elementary Education	59
0507	Engineering Science	213
0568	Engineering Science Techn Opt	18
7245	Gen Studies: Deaf Studies	13
7255	Gen Studies: Human Services	27
0180	General Studies	14
0199	General Studies: Art	108
0194	General Studies: Dance Option	10
0660	General Studies: ESL Studies	1
0193	General Studies: Music Option	23
0191	General Studies: Visual Arts	2
8107	GS: Health Specialization	938
0269	GS: Individualized Option	89
0179	GS: Movement Science Option	29
0336	Health Information Technology	4
0293	Healthcare Technician Cert	42
0572	Help Desk Cert	5
0255	Human Services	50
0562	Information Technology Fluency	2
0131	LA: Biology	7
0122	LA: History	12
0149	LA: Journalism/Communication	54
0197	LA: Middle/HS Teaching Option	47
0143	LA: Philosophy	9
0156	LA: Physical Sciences Option	22
0121	LA: Political Science	4
0137	LA: Psychology	175
0113	LA: Theater	18
0134	LA: Writing	29
0574	Laboratory Science	48
0239	Law Enforcement Cert	2
0100	Liberal Arts	479
8103	Medical Assistant	22
0260	Medical Assistant (Day)	24
0347	Medical Billing Cert (IH)	12

8100	Medical Coding Cert	12
8105	Medical Laboratory Technology	22
8101	Medical Office Assistant Cert	9
0195	Music Technology Certificate	8
8104	Nursing (ADN)	5
0213	Nursing (ADN) Day	59
8106	Ophthalmic Assistant Cert	3
0144	Paralegal Career	1
0256	Paramedic (EMT-P) Technology	11
0254	Paramedic Technology Cert	3
0209	Practical Nursing (PN)	28
8109	Public Health	11
0212	Radiologic Technology	31
0214	Respiratory Care	34
0264	Sleep Technologist Cert (	16
0566	Test B Elec Equip Tch-Raytheon	14
0997	Unclassified -Academic Status	18
0996	Unclassified -Former Graduate	22
0995	Unclassified -High School	262
0994	Unclassified -Home Schooled	3
0993	Unclassified -HS Dual Enrollmt	9
0999	Unclassified -Major Undeclared	13
0998	Unclassified -No Matriculate	183
0539	Web Page Design & Development	2
Total	Total	5,115

## Credits Generated by Discipline

Table 22 provides a complete list of departments and disciplines, and the total credits generated in each discipline in Spring 2017.

**Table 22. Credits by Discipline (Spring 2017)**

Department		Discipline	Total Credits
Academic Preparation	DHH	Deaf & Hard of Hearing	12
	ESL	English as a Second Language	1,643
	FYS	First Year Seminar	348
	MAT	Math	6,293
	REA	Reading	423
	RWR	Reading, Writing, And Reasoning	654
	WRT	Writing	525
Art & Design	ART	Art	1,068
	GRA	Graphic Design	0
Behavioral Sciences	ANT	Anthropology	285
	PSY	Psychology	2,454
	SOC	Sociology	1,302
Business	ACC	Accounting	1,077
	BUS	Business	897
	FIN	Finance	99
	HST	Hospitality & Tourism	12
	MGT	Management	135
	MKT	Marketing	217
	TLT	Travel & Tourism	24
Computer Information Science	CIS	Computer Information Sciences	2,822
	CTN	Computer Technology Hardware & Networking	372

Criminal Justice	CRJ	Criminal Justice	942
Deaf Studies	ASL	American Sign Language	337
	DST	Deaf Studies	36
Education	ECE	Early Childhood Education	591
	EDU	Education	258
Engineering/Physics	CTE	Computer Technology Electronics	238
	EST	Engineering Science & Technology	502
	PHS	Physics	239
English	COM	Communications	1,017
	ENG	English	3,984
	JRN	Journalism	111
	LIT	Literature	981
Global Studies	CHN	Chinese	0
	ECO	Economics	657
	FRN	French	6
	GEO	Geography	84
	GER	German	0
	GOV	Government	357
	HIS	History	900
	ITN	Italian	0
	LHU	Liberal Arts/Humanities	0
	PHI	Philosophy	819
	REL	Religion	90
	SPN	Spanish	78
Health	CHW	Public Health	177

	CLS	Clinical Lab Science	84
	CTA	Computed Tomography	51
	CVT	Electrocardiography	144
	DAS	Dental Assistant	286
	EMS	Emergency Medical Services	120
	EMT	Emergency Medical Technician	238
	GRN	Gerontology	0
	HES	Health Sciences	1,395
	MAS	Medical Assistant	273
	MRT	Medical Records Technology	295
	NUR	Registered Nursing	691
	OPT	Ophthalmic Assistant	24
	PED	Physical Education/Sport & Leisure Studies	139
	PNS	Practical Nursing	275
	PSG	Polysomnography	158
	RSC	Respiratory Care	407
	RTA	Radiologic Technology	354
Human Services	HUS	Human Services	600
Math	MAT	Math	6,293
Natural Sciences	BIO	Biology	4,340
	CHM	Chemistry	917
	ERS	Earth Science	240
	SCI	Science	420
Other	CLL	Credit for Lifelong Learning	0
	COP	Cooperative Education	63
	HON	Honors	39
	LHU	Liberal Arts/Humanities	0
	OPN*	AF ROTC Foundations of USAF	0



Paralegal	PAR	Paralegal	0
Performing Arts	DAN	Dance	120
	MUS	Music	341
	THE	Theater	90

\*OPN used for transfer of credit