

Northern Essex Community College Fall 2016 Enrollment Update

There are 5,976 credit students attending Northern Essex Community College for the Fall 2016 semester, a decrease of -9.8% from Fall 2015. The full-time equivalent (FTE), defined as the total number of credit hours generated divided by 15, decreased by -8.7% this fall.

Table 1.

	Fall 2011	Fall 2012	Fall 2013	Fall 2014	Fall 2015	Fall 2016	1-Year Change	5-Year Change
Student Headcount	7,036	7,312	7,352	6,963	6,628	5,976	-9.8%	-15.1%
Full-Time Equivalent (FTE)	4,255	4,482	4,413	4,127	3,951	3,606	-8.7%	-15.3%

Day vs. Evening Enrollment

Individuals may be counted in both day and evening categories; therefore, the sum of day and evening headcounts in table 2 exceeds the unduplicated student headcount in table 1. Day includes “day” enrollment and “both” enrollment. Evening includes “evening” enrollment, “contract” enrollment, and “other” enrollment. Online campus counts represent only 100% web only courses (WEBON).

Table 2.

	Fall 2011	Fall 2012	Fall 2013	Fall 2014	Fall 2015	Fall 2016	1-Year Change	5-Year Change
Day Headcount	4,902	5,093	4,957	4,582	4,534	4,044	-10.8%	-17.5%
Day FTE	2,701	2,829	2,697	2,473	2,413	2,159	-10.5%	-20.1%
Evening Headcount	3,375	3,546	3,725	3,621	3,308	2,846	-14.0%	-15.7%
Evening FTE	1,175	1,261	1,322	1,254	1,126	988	-12.2%	-15.9%
Online Headcount	1,274	1,320	1,318	1,381	1,400	1,462	4.4%	14.8%
Online FTE	379	391	393	400	412	459	11.5%	21.1%

Campus of Enrollment

Individuals may be counted in more than one campus category; therefore, the sum of Haverhill, Lawrence, online and other headcounts in table 3 exceeds the unduplicated student headcount in table 1. Haverhill and Lawrence campus counts include web hybrid courses, where the weekly on-campus class meets on that respective campus. All Haverhill and Lawrence campuses' headcounts do not include WEBON. Haverhill and Lawrence campus headcounts and FTE had included WEBON in Enrollment Reports prior to Fall 2011. The online headcount and FTE represent only the 100% online courses (WEBON). This is the first Fall Enrollment Update referring to five separate Lawrence campuses. These include the addition of 420 Common Street and the El-Hefni Health and Technology Center.

Table 3.

	Fall 2011	Fall 2012	Fall 2013	Fall 2014	Fall 2015	Fall 2016	1-Year Change	5-Year Change
Haverhill* Headcount	4,805	4,958	4,787	4,385	4,020	3,319	-17.4%	-30.9%
Haverhill* FTE	2,487	2,586	2,429	2,159	1,983	1,615	-18.5%	-35.1%
Lawrence* Headcount	2,840	2,829	3,160	3,181	3,138	3,027	-3.5%	6.6%
Lawrence* FTE	1,195	1,228	1,360	1,371	1,360	1,352	-0.6%	13.1%
Online** Headcount	1,274	1,320	1,318	1,381	1,400	1,462	4.4%	14.8%
Online** FTE	379	391	393	400	412	459	11.5%	21.1%
Other Headcount	720	873	857	646	691	637	-7.8%	-11.5%
Other FTE	195	277	230	197	197	180	-8.4%	-7.7%
Lawrence Main Headcount	2,561	2,494	2,527	2,434	2,449	2,442	-0.3%	-4.6%
Lawrence Main FTE	1,071	1,055	986	937	925	944	2.0%	-11.9%
Lawrence El-Hefni Health Headcount	0	0	0	564	471	562	19.3%	-
Lawrence El-Hefni Health FTE	0	0	0	198	163	193	18.6%	-
Lawrence 420 Common St Headcount	0	0	189	276	304	244	-19.7%	-
Lawrence 420 Common St FTE	0	0	72	75	120	92	-23.2%	-
Lawrence 52 Franklin St Headcount	20	38	464	418	398	0	-100.0%	-100.0%
Lawrence 52 Franklin St FTE	4	5	160	124	107	0	-100.0%	-100.0%
Lawrence River Walk Headcount	466	624	581	190	217	418	92.6%	-10.3%
Lawrence River Walk FTE	119	168	141	38	45	123	175.0%	3.4%

*Haverhill & Lawrence campus counts include web hybrid courses where the weekly on-campus class meets on that respective campus.

**Online campus counts represent only 100% online courses (WEBON).

FTE at the Lawrence Campuses

NECC’s presence has been expanding in Lawrence. The River Walk Campus opened in Fall of 2010, and 52 Franklin Street (iHealth) opened in Fall of 2011. Since then, 420 Common Street and the El-Hefni Health and Technology Center have been added, and use of 52 Franklin Street was discontinued. Table 3a shows how the FTE is distributed between the Lawrence campuses from Fall 2013 to Fall 2016. The two newest campuses (El Hefni and Common St) account for 21.1% of the FTE.

Table 3a.

	Fall 2013	% of FTE in Lawrence 2013	Fall 2014	% of FTE in Lawrence 2014	Fall 2015	% of FTE in Lawrence 2015	Fall 2016	% of FTE in Lawrence 2016
Lawrence FTE	1,360	100.0%	1,371	100.0%	1,360	100.0%	1,352	100.0%
Lawrence Main FTE	986	72.5%	937	68.3%	925	68.1%	944	69.8%
Lawrence El-Hefni Health FTE	0	0.0%	198	14.4%	163	12.0%	193	14.3%
Lawrence 420 Common Street FTE	72	5.3%	75	5.5%	120	8.8%	92	6.8%
Lawrence 52 Franklin Street FTE	160	11.8%	124	9.0%	107	7.9%	0	0.0%
Lawrence River Walk FTE	141	10.4%	38	2.8%	45	3.3%	123	9.1%

Instructional Method

Table 4 shows number of seats by instructional method. Please note, all traditional classroom instruction courses are being transitioned into either WEB enhanced or WEB companion. AP was already re-coded effective Spring 2013. Liberal Arts were re-coded in Summer 2013. Math and Science were re-coded in the Fall of 2013. More of the courses throughout NECC are converting to a WEB companion format. In addition to Liberal Arts and Sciences, this is especially so in the Health Professions, Art, Business, Communications and Technology programs.

Table 4.

	Fall 2011		Fall 2012		Fall 2013		Fall 2014		Fall 2015		Fall 2016		1-Year Change	5-Year Change
	#	%	#	%	#	%	#	%	#	%	#	%		
Classroom Instruction (TRAD)	9,597	46.9%	10,399	48.7%	854	4.0%	771	4.0%	521	2.8%	456	2.7%	-12.5%	-95.2%
Web Companion (WEBCP)	4,575	22.4%	4,888	22.9%	10,986	51.9%	10,490	54.0%	9,833	52.9%	7,736	46.0%	-21.3%	69.1%
Web Enhanced (WEBEN)	3,263	16.0%	2,941	13.8%	5,574	26.3%	4,609	23.7%	4,724	25.4%	4,908	29.2%	3.9%	50.4%
Web Hybrid – 50% Online (WEBHY)	1,120	5.5%	1,242	5.8%	1,837	8.7%	1,566	8.1%	1,523	8.2%	1,523	9.1%	0.0%	36.0%
Web Online – 100% Online (WEBON)	1,889	9.2%	1,902	8.9%	1,909	9.0%	1,937	10.0%	1,981	10.7%	2,198	13.1%	11.0%	16.4%
Individual Instruction (INDIV)	-	-	-	-	-	-	45	0.2%	12	0.1%	0	0.0%	-100.0%	-
Total Seats	20,444		21,372		21,160		19,418		18,594		16,821			

Credit Enrollment

Figure 1 and table 5 show the distribution of students who are part-time and those who are full-time. Part-time students are those enrolled in 11 or fewer credits. Full-time students are enrolled in 12 or more credits. A higher percentage (65.4%) of students who were enrolled in Fall 2016 were part-time.

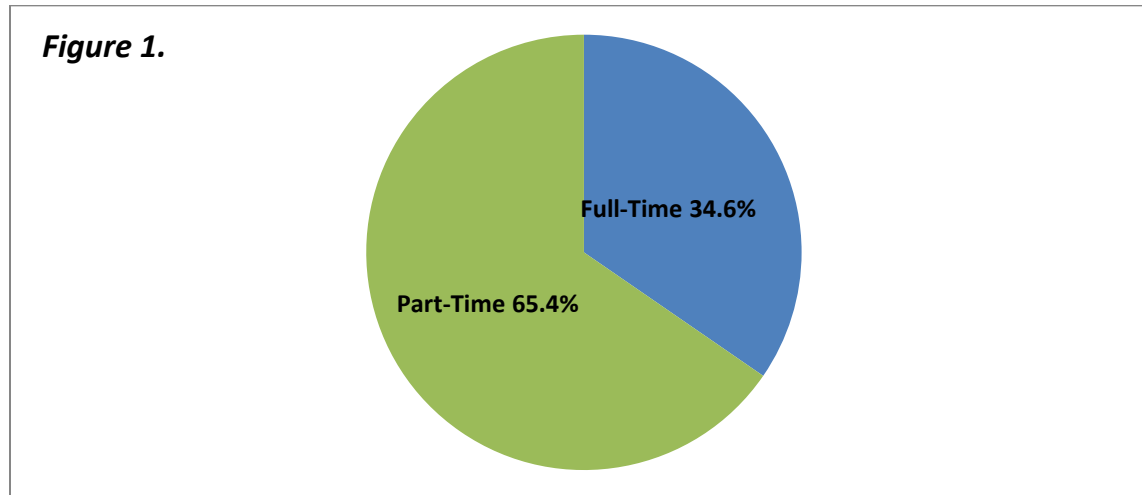


Table 5.

	Fall 2011		Fall 2012		Fall 2013		Fall 2014		Fall 2015		Fall 2016		1-Year Change	5-Year Change
	#	%	#	%	#	%	#	%	#	%	#	%		
Full-Time	2,515	36.0%	2,596	36.0%	2,438	33.2%	2,298	33.0%	2,219	33.5%	2,069	34.6%	-6.8%	-17.7%
Part-Time	4,521	64.0%	4,716	64.0%	4,914	66.8%	4,665	67.0%	4,409	66.5%	3,907	65.4%	-11.4%	-13.6%

Student Status

Figure 2 and table 6 show student distribution by status. The majority of students enrolled in Fall 2016 are continuing students.

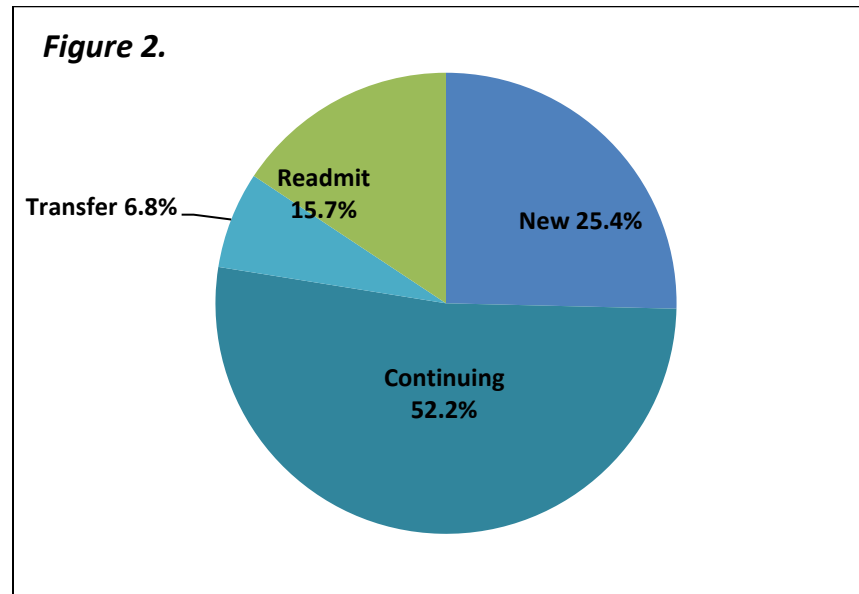


Table 6.

	Fall 2011		Fall 2012		Fall 2013		Fall 2014		Fall 2015		Fall 2016		1-Year Change	5-Year Change
	#	%	#	%	#	%	#	%	#	%	#	%		
New	1,452	21.0%	1,642	22.0%	1,839	25.0%	1,734	24.9%	1,724	26.0%	1,516	25.4%	-12.1%	4.4%
Continuing	3,643	52.0%	3,826	52.0%	3,843	52.3%	3,697	53.1%	3,424	51.7%	3,117	52.2%	-9.0%	-14.4%
Transfer	359	5.0%	435	6.0%	495	6.7%	454	6.5%	496	7.5%	407	6.8%	-17.9%	13.4%
Readmit	1,574	22.0%	1,409	19.0%	1,175	16.0%	1,078	15.5%	984	14.8%	936	15.7%	-4.9%	-40.5%
Other	8	0.0%	0	0.0%	0	0.0%	0	0.0%	0	0.0%	0	0.0%	0.0%	-100.0%

Table 6a shows the distribution of degree seeking and non-degree seeking students by student status. The majority of students are degree seeking and continuing.

Table 6a.

	Fall 2011		Fall 2012		Fall 2013		Fall 2014		Fall 2015		Fall 2016		1-Year Change	5-Year Change
	#	%	#	%	#	%	#	%	#	%	#	%		
Degree Seeking														
New	1,185	16.8%	1,441	19.7%	1,518	20.6%	1,365	19.6%	1,330	20.1%	1,258	21.1%	-5.4%	6.2%
Continuing	3,487	49.6%	3,707	50.7%	3,746	51.0%	3,620	52.0%	3,352	50.6%	3,071	51.4%	-8.4%	-11.9%
Transfer	356	5.1%	369	5.0%	426	5.8%	389	5.6%	427	6.4%	337	5.6%	-21.1%	-5.3%
Readmit	1,352	19.2%	1,263	17.3%	1,056	14.4%	985	14.1%	901	13.6%	864	14.5%	-4.1%	-36.1%
Other	2	0.0%	0	0.0%	0	0.0%	0	0.0%	0	0.0%	0	0.0%	-	-100.0%
Non-Degree Seeking														
New	267	3.8%	201	2.7%	321	4.4%	369	5.3%	394	5.9%	258	4.3%	-34.5%	-3.4%
Continuing	156	2.2%	119	1.6%	97	1.3%	77	1.1%	72	1.1%	46	0.8%	-36.1%	-70.5%
Transfer	3	0.0%	66	0.9%	69	0.9%	65	0.9%	69	1.0%	70	1.2%	1.4%	2,233.0%
Readmit	228	3.2%	146	2.0%	119	1.6%	93	1.3%	83	1.3%	72	1.2%	-13.3%	-68.4%
Other	0	0.0%	0	0.0%	0	0.0%	0	0.0%	0	0.0%	0	0.0%	-	-

Gender

Figure 3 and table 7 show distribution of enrolled students in Fall 2016 by gender.

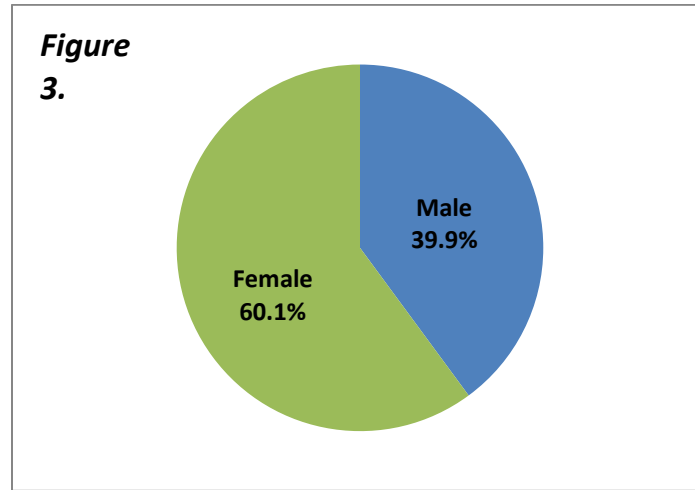


Table 7.

	Fall 2011		Fall 2012		Fall 2013		Fall 2014		Fall 2015		Fall 2016		1-Year Change	5-Year Change
	#	%	#	%	#	%	#	%	#	%	#	%		
Male	2,692	38.0%	2,770	38.0%	2,817	38.3%	2,680	38.5%	2,560	38.6%	2,382	39.9%	-7.0%	-11.5%
Female	4,344	62.0%	4,542	62.0%	4,535	61.7%	4,283	61.5%	4,068	61.4%	3,594	60.1%	-11.7%	-17.3%

Age

Figure 4 and table 8 show the distribution of students enrolled in Fall 2016 by age.

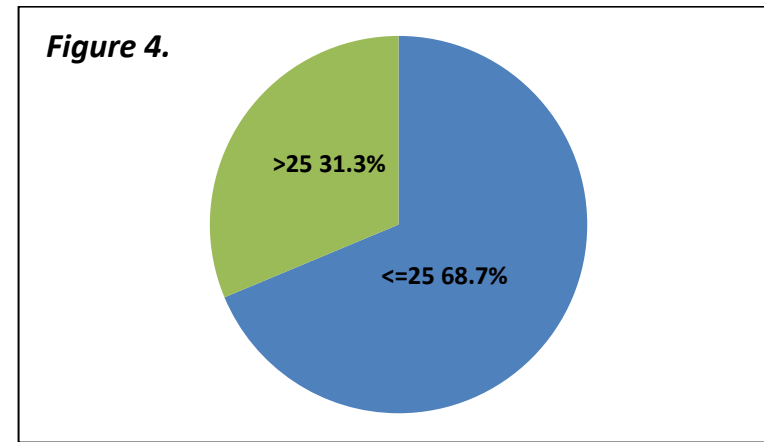


Table 8.

	Fall 2011		Fall 2012		Fall 2013		Fall 2014		Fall 2015		Fall 2016		1-Year Change	5-Year Change
	#	%	#	%	#	%	#	%	#	%	#	%		
<=25	4,267	60.6%	4,616	63.1%	4,914	66.8%	4,741	68.1%	4,595	69.3%	4,108	68.7%	-10.6%	-3.7%
>25	2,767	39.3%	2,696	36.9%	2,437	33.1%	2,222	31.9%	2,033	30.7%	1,868	31.3%	-8.1%	-32.5%
Unknown/Missing	2	0.0%	0	0.0%	1	0.0%	0	0.0%	0	0.0%	0	0.0%	-	-100.0%

The college-wide minimum age of Fall 2016 students is 15 and the maximum age is 73. Such a wide range may skew the mean (average) age, so the median (middle) and mode (most common) ages are reported in table 9.

Table 9.

	Fall 2011	Fall 2012	Fall 2013	Fall 2014	Fall 2015	Fall 2016
Mean	27	27	26	25	25	25
Median	23	23	22	22	22	22
Mode	21	20	19	19	19	19

Table 9a shows the mean, median, and mode for age for each campus. Table 9a shows only Fall 2016 data.

Table 9a.

	NECC Wide	Haverhill	Lawrence	Lawrence Main	Lawrence 52 Franklin	Lawrence River Walk	Lawrence Common St	Lawrence El-Hefni	WEBON	Other
Mean	25	24	26	25	-	28	25	27	26	25
Median	22	21	22	22	-	23	23	24	23	22
Mode	19	19	19	19	-	18	20	19	20	17

Ethnicity

Figure 5 and table 10 show the distribution of students enrolled in Fall 2016 by ethnicity. Majority is defined as White non-Hispanic ethnicity. Minority includes Black, non-Hispanic, Asian, Cape Verdean, Native Hawaiian/Pacific Islander, American Indian/Alaskan Native and Multi-Racial ethnicities. In 2008, Native Hawaiian/Pacific Islander and Multi-Racial were not tallied separately. Students of those ethnic backgrounds were counted in other race/ethnicities or in Unknown.

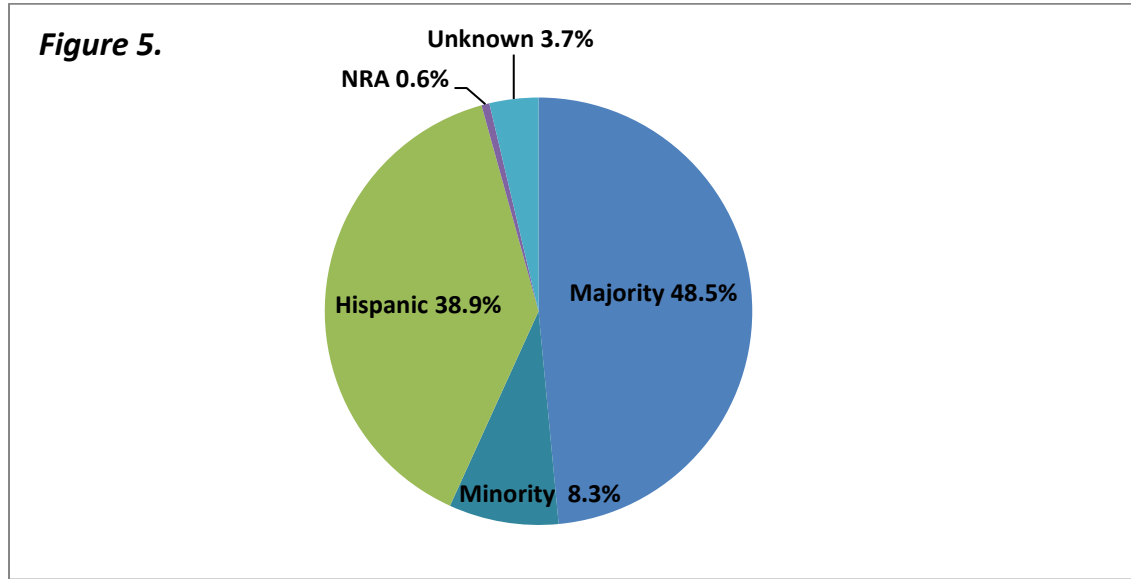


Table 10.

	Fall 2011		Fall 2012		Fall 2013		Fall 2014		Fall 2015		Fall 2016		1-Year Change	5-Year Change
	#	%	#	%	#	%	#	%	#	%	#	%		
Majority	4,153	59.0%	4,135	57.0%	3,946	53.7%	3,544	50.9%	3,335	50.3%	2,899	48.5%	-13.1%	-30.2%
Minority	460	7.0%	499	7.0%	539	7.3%	530	7.6%	491	7.4%	494	8.3%	0.6%	7.4%
Hispanic	2,112	30.0%	2,455	34.0%	2,603	35.4%	2,570	36.9%	2,570	38.8%	2,326	38.9%	-9.5%	10.1%
NRA	50	1.0%	36	0.5%	52	0.7%	39	0.6%	41	0.6%	35	0.6%	-14.6%	-30.0%
Unknown	261	4.0%	187	3.0%	212	2.9%	280	4.0%	191	2.9%	222	3.7%	16.2%	-14.9%

Table 10a displays the enrollment where Minority is re-categorized into: Black, non-Hispanic, Asian, Cape Verdean, Native Hawaiian/Pacific Islander, American Indian/Alaskan Native and Multi-Racial ethnicities.

Table 10a.

	Fall 2011		Fall 2012		Fall 2013		Fall 2014		Fall 2015		Fall 2016		1-Year Change	5-Year Change
	#	%	#	%	#	%	#	%	#	%	#	%		
Asian	81	1.0%	113	2.0%	105	1.4%	127	1.8%	135	2.0%	136	2.3%	0.7%	67.9%
Black, non-Hispanic	238	3.0%	258	4.0%	300	4.1%	273	3.9%	247	3.7%	255	4.3%	3.2%	7.1%
Hawaiian/ Pacific Islander	66	1.0%	41	1.0%	34	0.5%	36	0.5%	28	0.4%	22	0.4%	-21.4%	-66.7%
Hispanic	2,112	30.0%	2,455	34.0%	2,603	35.4%	2,570	36.9%	2,570	38.8%	2,326	38.9%	-9.5%	10.1%
Multi-Racial	63	1.0%	74	1.0%	89	1.2%	83	1.2%	68	1.0%	71	1.2%	4.4%	12.7%
Native American	12	0.0%	13	0.0%	11	0.1%	11	0.2%	13	0.2%	10	0.2%	-23.1%	-16.7%
Non-Resident Alien	50	1.0%	36	0.5%	52	0.7%	39	0.6%	41	0.6%	35	0.6%	-14.6%	-30.0%
White, non-Hispanic	4,153	59.0%	4,135	57.0%	3,946	53.7%	3,544	50.9%	3,335	50.3%	2,899	48.5%	-13.1%	-30.2%
Unknown	261	4.0%	187	3.0%	212	2.9%	280	4.0%	191	2.9%	222	3.7%	16.2%	-14.9%

Table 10b presents Ethnicity by campus. Only Fall 2016 data is shown below. For total headcount by campus of enrollment, please refer to Table 3.

Table 10b.

	NECC Wide		Haverhill		Lawrence Main		Lawrence 52 Franklin		Lawrence River Walk		Lawrence Common St		Lawrence El-Hefni		WEBON		Other	
	#	%	#	%	#	%	#	%	#	%	#	%	#	%	#	%	#	%
Majority	2,899	48.5%	1,933	58.2%	740	30.3%	-	-	161	38.5%	59	24.2%	221	39.3%	838	57.3%	361	56.7%
Minority	494	8.3%	282	8.5%	216	8.8%	-	-	21	5.0%	21	8.6%	50	8.9%	120	8.2%	48	7.5%
Hispanic	2,326	38.9%	1,002	30.2%	1,432	58.6%	-	-	228	54.5%	159	65.2%	281	50.0%	456	31.2%	141	22.1%
NRA	35	0.6%	21	0.6%	11	0.5%	-	-	1	0.2%	4	1.6%	4	0.7%	12	0.8%	5	0.8%
Unknown	222	3.7%	81	2.4%	43	1.8%	-	-	7	1.7%	1	0.4%	6	1.1%	36	2.5%	82	12.9%

Table 10c displays the Fall 2016 enrollment where Minority is re-categorized into: Black, non-Hispanic, Asian, Cape Verdean, Native Hawaiian/Pacific Islander, American Indian/Alaskan Native and Multi-Racial ethnicities.

Table 10c.

	NECC Wide		Haverhill		Lawrence Main		Lawrence 52 Franklin		Lawrence River Walk		Lawrence Common St		Lawrence El-Hefni		WEBON		Other	
	#	%	#	%	#	%	#	%	#	%	#	%	#	%	#	%	#	%
Asian	136	2.3%	75	2.3%	55	2.3%	-	-	1	0.2%	9	3.7%	17	3.0%	35	2.4%	21	3.3%
Black, non-Hispanic	255	4.3%	130	3.9%	130	5.3%	-	-	14	3.3%	7	2.9%	29	5.2%	52	3.6%	23	3.6%
Hawaiian/ Pacific Islander	22	0.4%	14	0.4%	7	0.3%	-	-	1	0.2%	3	1.2%	0	0.0%	8	0.5%	0	0.0%
Hispanic	2,326	38.9%	1,002	30.2%	1,432	58.6%	-	-	228	54.5%	159	65.2%	281	50.0%	456	31.2%	141	22.1%
Multi-Racial	71	1.2%	54	1.6%	22	0.9%	-	-	4	1.0%	2	0.8%	4	0.7%	24	1.6%	3	0.5%
Native American	10	0.2%	9	0.3%	2	0.1%	-	-	1	0.2%	0	0.0%	0	0.0%	1	0.1%	1	0.2%
NRA	35	0.6%	21	0.7%	11	0.5%	-	-	1	0.2%	4	1.6%	4	0.7%	12	0.8%	5	0.8%
White	2,899	48.5%	1,933	58.2%	740	30.3%	-	-	161	38.5%	59	24.2%	221	39.3%	838	57.3%	361	56.7%
Unknown	222	3.7%	81	2.4%	43	1.8%	-	-	7	1.7%	1	0.4%	6	1.1%	36	2.5%	82	12.9%

Cities & Towns of Residence

Table 11 shows the top 10 cities and towns of residence which account for 79% of NECC's Fall 2016 student headcount. The top 3 cities account for 61% of NECC's Fall 2015 student headcount.

Table 11.

	Fall 2011	Fall 2012	Fall 2013	Fall 2014	Fall 2015	Fall 2016		1-Yr Change	5-Yr Change
1 Lawrence	1,691	1,916	2,013	1,970	1,934	1,744	29.2%	-9.8%	3.1%
2 Haverhill (Bradford & Ward Hill)	1,318	1,396	1,426	1,346	1,236	1,135	19.0%	-8.2%	-13.9%
3 Methuen	835	871	835	821	841	784	13.1%	-6.8%	-6.1%
4 Amesbury	313	307	296	270	248	223	3.7%	-10.1%	-28.8%
5 North Andover	271	269	237	218	220	211	3.5%	-4.1%	-22.1%
6 Salem, NH	225	247	256	238	234	194	3.2%	-17.1%	-13.8%
7 Lowell	140	153	137	142	127	133	2.2%	4.7%	-5.0%
8 Andover	147	142	152	128	114	97	1.6%	-14.9%	-34.0%
9 Newburyport	130	114	128	92	88	90	1.5%	2.3%	-30.8%
10 Plaistow	115	125	126	108	97	89	1.5%	-8.2%	-22.6%
All Other Municipalities	1,851	1,772	1,746	1,630	1,489	1,276	21.4%	-14.3%	-31.1%

State of Residence- All NECC Students

Figure 6 and table 12 shows the state residence of NECC’s Fall 2016 student population. Most of NECC students claim Massachusetts as their state of residence, and New Hampshire ranks second in this category. For Fall 2016 the other states are: Maine, Connecticut, Florida, New Jersey, and Rhode Island.

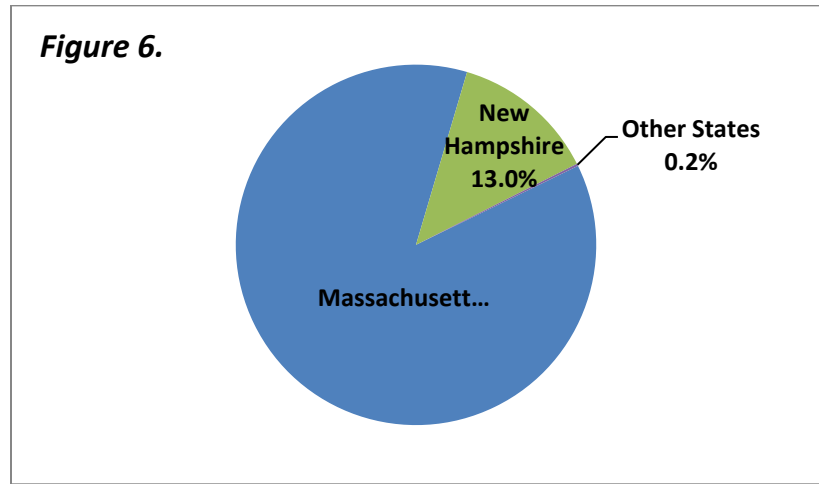


Table 12.

	Fall 2011	Fall 2012	Fall 2013	Fall 2014	Fall 2015	Fall 2016		1-Yr Change	5-Yr Change
Massachusetts	5,855	6,142	6,185	5,920	5,705	5,187	86.8%	-9.1%	-11.4%
New Hampshire	1,169	1,154	1,149	1,020	905	777	13.0%	-14.1%	-33.5%
Other States	12	16	18	23	18	12	0.2%	-33.3%	0.0%

State of Residence- Web Only Students

Figure 7 and table 13 shows the state residence of NECC’s Fall 2016 student population who took Web Only courses. Most of NECC students who took Web Only courses claim Massachusetts as their state of residence, and New Hampshire ranks second in this category. For Fall 2016 the other states are: Maine, Connecticut, Florida, and Rhode Island.

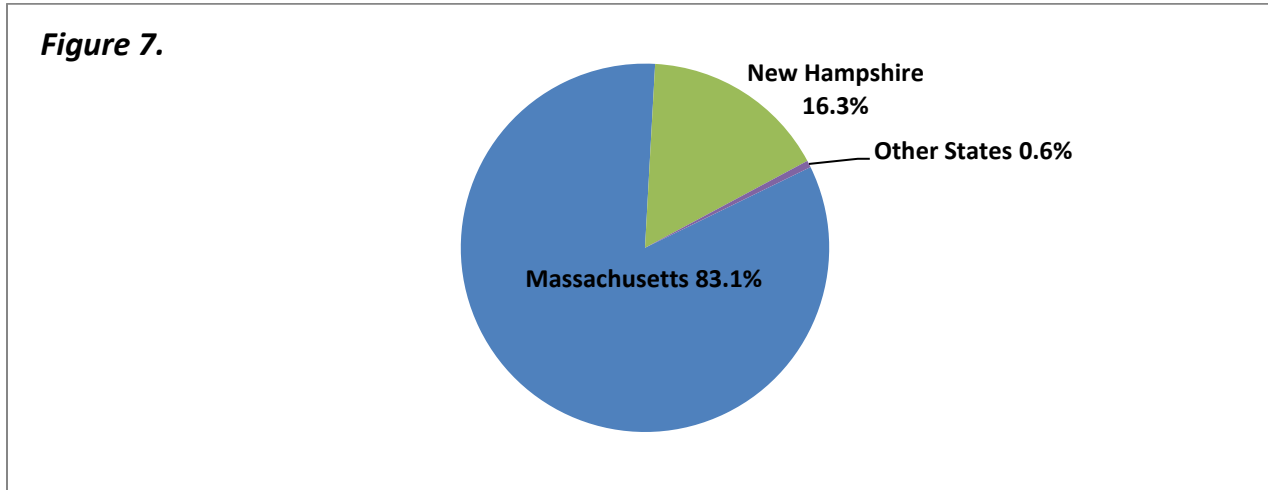


Table 13.

	Fall 2011	Fall 2012	Fall 2013	Fall 2014	Fall 2015	Fall 2016		1-Yr Change	5-Yr Change
Massachusetts	1,018	1,047	1,066	1,098	1,144	1,215	83.1%	6.2%	19.4%
New Hampshire	248	267	245	274	250	238	16.3%	-4.8%	-4.0%
Other States	8	6	7	9	6	9	0.6%	50.0%	12.5%

Programs of Study

The 10 largest programs of study (excluding Unclassified (09*) programs), as displayed in table 14, account for 60% of NECC's Fall 2016 enrollment.

Table 14.

Major	Major Code	Fall 2011	Fall 2012	Fall 2013	Fall 2014	Fall 2015	Fall 2016	1-Yr Change	5-Yr Change
1 General Studies: Health Specialization	8107	-	-	1,072	1,164	1,198	1,090	-9.0%	-
2 Liberal Arts	0100	394	464	362	337	653	582	-10.9%	47.7%
3 Business Transfer	0311	371	399	369	357	400	406	1.5%	9.4%
4 Criminal Justice	0200	368	376	413	383	373	288	-22.8%	-21.7%
5 Engineering Science	0507	191	229	248	259	259	266	2.7%	39.3%
6 Business Management	0308	264	263	298	295	301	263	-12.6%	-0.4%
7 LA: Psychology	0137	211	224	204	203	229	204	-10.9%	-3.3%
8 CIS: Information Technology	0559	156	176	162	149	170	178	4.7%	14.1%
9 CIS: Transfer Option	0565	-	42	81	96	139	172	23.7%	-
10 Early Childhood Education	0201	194	225	214	200	195	152	-22.1%	-21.6%

Enrollment

Table 15 provides a complete list of programs / classifications and the number of students enrolled for the Fall 2016 term.

Table 15.

Major Code	Major	Fall 2016
0100	Liberal Arts	582
0113	LA: Theater	23
0121	LA: Political Science	11
0122	LA: History	18
0131	LA: Biology	14
0134	LA: Writing	33
0136	Biology	150
0137	LA: Psychology	204
0143	LA: Philosophy	11
0144	Paralegal Career	3
0145	Paralegal Transfer	1
0147	Elementary Education	78
0149	LA: Journalism/Communication	64
0155	Dance Education Cert	3
0156	LA: Physical Sciences Option	29
0179	GS: Movement Science Option	58
0180	General Studies	27
0191	General Studies: Visual Arts	2
0193	General Studies: Music Option	36
0194	General Studies: Dance Option	12
0195	Music Technology Certificate	10
0196	GS: Phy Ed, Ex Sci, Sports Stu	1
0197	LA: Middle/HS Teaching Option	62
0199	General Studies: Art	129
0200	Criminal Justice	288
0201	Early Childhood Education	152
0209	Practical Nursing (PN)	27
0212	Radiologic Technology	32
0213	Nursing (ADN) Day	66
0214	Respiratory Care	35
0217	Alcohol Drug Abuse Counseling	43
0218	Dental Assisting	23
0239	Law Enforcement Cert	5
0254	Paramedic Technology Cert	17
0255	Human Services	82
0256	Paramedic (EMT-P) Technology	12
0257	Computed Tomography (CT) Cert	9
0260	Medical Assistant (Day)	24
0262	Community Support Human Svcs	21
0264	Sleep Technologist Cert	18
0266	DS: Interpreting Transfer	17

0267	Deaf Studies	7
0268	Deaf Studies Cert	3
0269	GS: Individualized Option	82
0293	Healthcare Technician Cert	49
0294	Community Health Worker Cert	3
0300	Accounting	100
0308	Business Management	263
0311	Business Transfer	406
0336	Health Information Technology	3
0343	Bus Mgt: Hospitality Option	9
0347	Medical Billing Cert (IH)	10
0372	Bus Mgt: Computer Applications	22
0381	Automotive Technology Cert	4
0506	Electronic Technology	4
0507	Engineering Science	266
0521	Computer Aided Drafting	12
0529	Electronic Equipment Tech Cert	4
0535	Computer Applications Cert	6
0539	Web Page Design & Development	4
0544	Computer Networking Cert	12
0559	CIS: Information Technology	178
0562	Information Technology Fluency	2
0563	CIS: Applications Option	33
0564	Computer Forensics Basic Cert	4
0565	CIS: Transfer Option	172
0566	Test B Elec Equip Tch-Raytheon	20
0567	Computer Security Cert	4
0568	Engineering Science Techn Opt	19
0569	Engineer Adv Manuf Prec Machin	1
0572	Help Desk Cert	4
0574	Laboratory Science	52
0662	Direct Support	4
0663	Direct Support Cert	5
0993	Unclassified -HS Dual Enrollmt	5
0994	Unclassified -Home Schooled	3
0995	Unclassified -High School	186
0996	Unclassified -Former Graduate	13
0997	Unclassified -Academic Status	12
0998	Unclassified -No Matriculate	202
0999	Unclassified -Major Undeclared	25
7245	Gen Studies: Deaf Studies	16
7255	Gen Studies: Human Services	59
8100	Medical Coding Cert	16
8101	Medical Office Assistant Cert	7
8102	Bus Mgt: Healthcare Practice	60
8103	Medical Assistant	27
8104	Nursing (ADN)	6
8105	Medical Laboratory Technology	26
8106	Ophthalmic Assistant Cert	10

8107	GS: Health Specialization	1090
8108	Elec Health Record Spec Cert	2
8109	Public Health	12
Total	Total	5976

Credits Generated by Discipline

Table 16 provides a complete list of disciplines and the total credits generated for Fall 2016.

**Table
16.**

Division	Department		Discipline	Fall 2015
FSLAS	Math	MAT	Math	4,642
FSLAS	Natural Sciences	BIO	Biology	4,945
		CHM	Chemistry	847
		ERS	Earth Science	276
		SCI	Science	433
FSLAS	Academic Preparation	FYS	First Year Seminar	1,134
		DHH	Deaf & Hard of Hearing	4
		ESL	English as a Second Language	1,924
		MAT	Math	3,267
		REA	Reading	972
		RWR	Reading, Writing, And Reasoning	1,284
		WRT	Writing	1,368
FSLAS	English	COM	Communications	1,131
		ENG	English	4,854
		JRN	Journalism	66
		LIT	Literature	1,107
FSLAS	Behavioral Sciences	ANT	Anthropology	303
		PSY	Psychology	2,730
		SOC	Sociology	1,368
FSLAS	Global Studies	CHN	Chinese	0
		ECO	Economics	621
		FRN	French	39
		GEO	Geography	48
		GER	German	0
		GOV	Government	429
		HIS	History	1,263
		ITN	Italian	39
		JPN	Japanese	3
		LHU	Liberal Arts/Humanities	0
		PHI	Philosophy	903
		REL	Religion	126
		SPN	Spanish	78
Health Div.	Health	CHW	Public Health	102
		CLS	Clinical Lab Science	175

		CTA	Computed Tomography	66
		CVT	Electrocardiography	54
		DAS	Dental Assistant	345
		EMS	Emergency Medical Services	96
		EMT	Emergency Medical Technician	275
		GRN	Gerontology	0
		HES	Health Sciences	1,399
		MAS	Medical Assistant	265
		MRT	Medical Records Technology	120
		NUR	Registered Nursing	671
		OPT	Ophthalmic Assistant	56
		PED	Physical Education/Sport & Leisure Studies	240
		PNS	Practical Nursing	235
		PSG	Polysomnography	139
		RSC	Respiratory Care	357
		RTA	Radiologic Technology	269
TAPS	Art & Design	ART	Art	1,225
		GRA	Graphic Design	0
TAPS	Computer Information Science	CIS	Computer Information Sciences	3,316
		CTN	Computer Technology Hardware & Networking	447
TAPS	Engineering/Physics	AUT	Automotive Technology	9
		CTE	Computer Technology Electronics	340
		EST	Engineering Science & Technology	509
		PHS	Physics	468
TAPS	Other	CLL	Credit for Lifelong Learning	0
		COP	Cooperative Education	48
		HON	Honors	27
		LHU	Liberal Arts/Humanities	0
		OPN	AF ROTC Foundations of USAF	0
TAPS	Performing Arts	DAN	Dance	153
		MUS	Music	340
		THE	Theater	81
TAPS	Business	ACC	Accounting	1,332
		BUS	Business	1,131
		FIN	Finance	78
		HST	Hospitality & Tourism	18
		MGT	Management	186
		MKT	Marketing	204
		TLT	Travel & Tourism	0
TAPS	Criminal Justice	CRJ	Criminal Justice	999

TAPS	Deaf Studies	ASL	American Sign Language	256
		DST	Deaf Studies	141
TAPS	Education	ECE	Early Childhood Education	621
		EDU	Education	291
TAPS	Human Services	HUS	Human Services	808
TAPS	Paralegal	PAR	Paralegal	0
TOTAL				54,096