

Enrollment Update Summer 2016



Office of Institutional Research

July 22, 2016

There were 2,062 credit students enrolled at NECC for the Summer 2016 semester, a -7.3% decrease from Summer 2015. The full-time equivalent (FTE), defined as the total number of credit hours generated divided by 15, decreased from 731 (Summer 2015) to 698 (Summer 2016) or a decrease of -4.5%.

Table 1.

	Summer 2011	Summer 2012	Summer 2013	Summer 2014	Summer 2015	Summer 2016	1-Year Change	5-Year Change
Student Headcount	2,429	2,615	2,546	2,441	2,224	2,062	-7.3%	-15.1%
Full-Time Equivalent (FTE)	822	878	877	806	731	698	-4.5%	-15.1%

Day vs. Evening Enrollment

Individuals may be counted in Day, Evening, and Online categories; therefore, the sum of Day, Evening, and Online headcounts in Table 2 exceeds the unduplicated student headcount in Table 1.

Table 2.

	Summer 2011	Summer 2012	Summer 2013	Summer 2014	Summer 2015	Summer 2016	1-Year Change	5-Year Change
Day Headcount ¹	72	25	96	62	63	42	-33.3%	-41.7%
Day FTE	30.00	16.00	26.00	18.00	16.27	20.20	24.2%	-32.7%
Evening Headcount ²	1,806	1,992	2,510	1,765	1,575	1,431	-9.1%	-20.8%
Evening FTE	541.00	599.00	584.00	517.00	455.80	404.47	-11.3%	-25.2%
Online ³ Headcount	938	965	972	926	946	974	3.0%	3.8%
Online FTE	251.00	262.00	267.00	259.00	259.33	273.60	5.5%	9.0%

¹Day includes "D-state" enrollment and "B-DCE, Day-time" enrollment.

²Evening includes "Evening" enrollment, "Contract" enrollment and "Other" enrollment.

³Online campus counts represent only 100% Online (WEBON) only. This is the second Summer Enrollment Update where the online enrollment has been separated from the Day and Evening enrollments.

Campus of Enrollment

Individuals may be counted in more than one Campus category; therefore, the sum of headcounts in Table 3 exceeds the unduplicated student headcount in Table 1.

Table 3.

	Summer 2011	Summer 2012	Summer 2013	Summer 2014	Summer 2015	Summer 2016	1-Year Change	5-Year Change
Haverhill ¹ Headcount	1,253	1,289	1,315	1,064	985	788	-20.0%	-37.1%
Haverhill ¹ FTE	347	362	372	292	269	206	-23.4%	-40.7%
Lawrence ¹ Headcount	706	789	538	815	691	696	0.7%	-1.4%
Lawrence ¹ FTE	196	223	213	216	186	189	1.5%	-3.6%
Online* Headcount	938	965	972	926	946	974	3.0%	3.8%
Online* FTE	252	262	267	259	259	274	5.5%	8.6%
Other** Headcount	137	150	145	138	98	155	58.2%	13.1%
Other** FTE	28	31	25	26	17	30	72.9%	6.2%
Lawrence Main Headcount	698	712	538	537	406	422	3.9%	-39.5%
Lawrence Main FTE	193	201	152	134	98	106	8.5%	-45.2%
Lawrence El-Hefni Health Headcount	0	0	0	139	142	238	67.6%	-
Lawrence El-Hefni Health FTE	0	0	0	39	45	67	50.2%	-
Lawrence 420 Common St Headcount	0	0	0	0	12	0	-100.0%	-
Lawrence 420 Common St FTE	0	0	0	0	6	0	-100.0%	-
Lawrence iHealth Headcount	0	72	172	127	135	0	-100.0%	-
Lawrence iHealth FTE	0	20	46	33	29	0	-100.0%	-
Lawrence River Walk Headcount	8	27	33	49	42	71	69.0%	787.5%
Lawrence River Walk FTE	2	1	15	10	8	16	92.9%	710.0%

¹Haverhill & Lawrence campus counts include Web Hybrid courses where the weekly on-campus class meets on that respective campus.

*Online campus counts represent only 100% Web Only (WEBON) courses.

**For Summer 2016, Other headcount and FTE includes Off Campus and On Line (that is not WEBON).

FTE at the Lawrence Campuses

NECC's presence has been expanding in Lawrence. The River Walk Campus opened in Fall of 2010, and iHealth opened in Fall of 2011. Since then, 420 Common Street and the El-Hefni Health and Technology Center have been added. Table 3a shows how the FTE is distributed between the Lawrence Campuses in Summer 2014 through Summer 2016.

Table 3a.

	Summer 2014	% of FTE in Lawrence 2014	Summer 2015	% of FTE in Lawrence 2015	Summer 2016	% of FTE in Lawrence 2016
Lawrence FTE	216	100.0%	186	100.0%	189	100.0%
Lawrence Main FTE	134	62.0%	98	52.4%	106	56.0%
Lawrence El-Hefni Health FTE	39	18.1%	45	24.0%	67	35.4%
Lawrence 420 Common Street FTE	0	0.0%	6	3.4%	0	0.0%
Lawrence iHealth FTE	33	15.3%	29	15.7%	0	0.0%
Lawrence River Walk FTE	10	4.6%	8	4.5%	16	8.6%

Instructional Method by Seats

Table 4 shows number of seats by instructional method.

Table 4.

	Summer 2011		Summer 2012		Summer 2013		Summer 2014		Summer 2015		Summer 2016		1-Year Change	5-Year Change
	#	%	#	%	#	%	#	%	#	%	#	%		
Classroom Instruction (TRAD)	1,834	46.9%	2,096	50.8%	994	24.2%	316	8.3%	86	2.5%	28	0.9%	-67.4%	-98.5%
Web Companion (WEBCP)	595	15.2%	416	10.1%	1,121	27.2%	998	26.4%	830	24.2%	771	23.7%	-7.1%	29.6%
Web Enhanced (WEBEN)	188	4.8%	113	2.7%	254	6.2%	848	22.4%	925	27.0%	752	23.1%	-18.7%	300.0%
Web Hybrid – 50% Online (WEBHY)	64	1.6%	230	5.6%	458	11.1%	377	10.0%	331	9.7%	400	12.3%	20.8%	525.0%
Web Online – 100% Online (WEBON)	1,233	31.5%	1,273	30.8%	1,288	31.3%	1,247	32.9%	1,255	36.6%	1,308	40.1%	4.2%	6.1%
Total Seats	3,914		4,128		4,115		3,786		3,427		3,259		-4.9%	-16.7%

Credit Enrollment

Figure 1 and table 5 show the distribution of students who are part-time and those who are full-time. Part-time students are those enrolled in 11 or fewer credits. Full-time students are enrolled in 12 or more credits. A higher percentage (98.3%) of students who were enrolled in Summer 2016 were part-time.

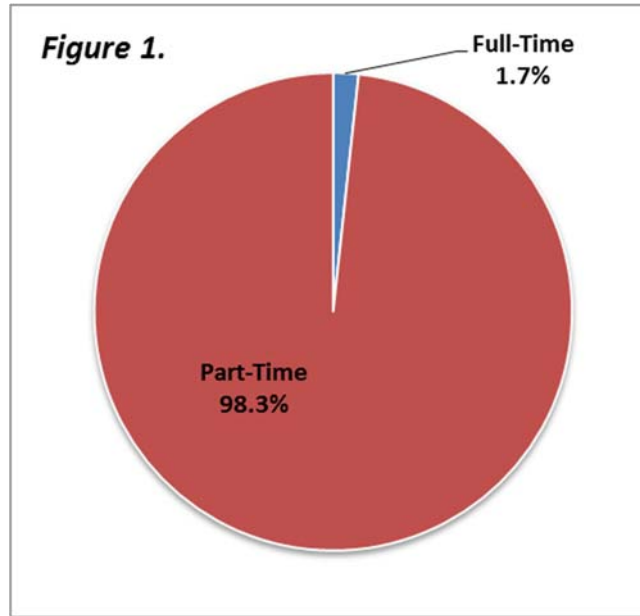


Table 5.

	Summer 2011		Summer 2012		Summer 2013		Summer 2014		Summer 2015		Summer 2016		1-Year Change	5-Year Change
	#	%	#	%	#	%	#	%	#	%	#	%		
Full-Time	42	1.7%	43	1.6%	60	2.4%	38	1.6%	36	1.6%	35	1.7%	-2.8%	-16.7%
Part-Time	2,387	98.3%	2,572	98.4%	2,486	97.6%	2,373	98.4%	2,188	98.4%	2,027	98.3%	-7.4%	-15.1%

Student Status

Figure 2 and table 6 show student distribution by status. The majority of students enrolled in Summer 2016 are continuing students (64.5%).

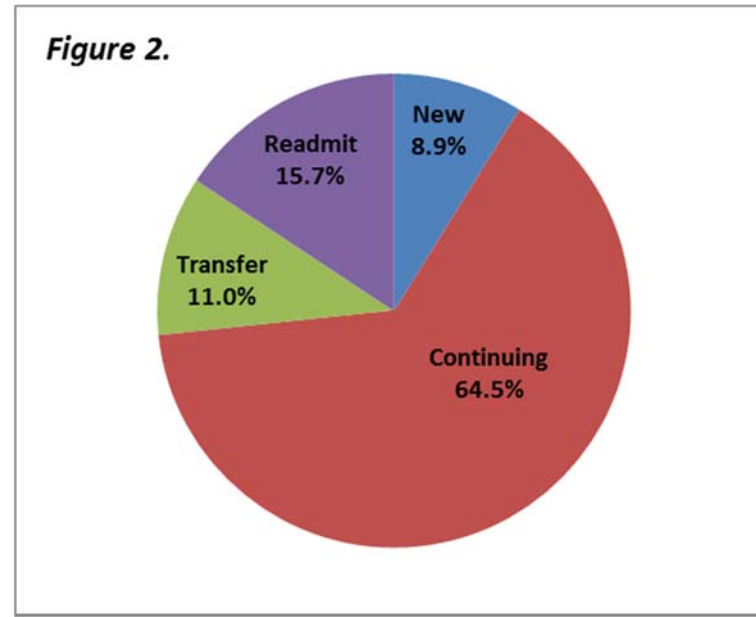


Table 6.

	Summer 2011		Summer 2012		Summer 2013		Summer 2014		Summer 2015		Summer 2016		1-Year Change	5-Year Change
	#	%	#	%	#	%	#	%	#	%	#	%		
New	459	18.9%	243	9.3%	240	9.4%	229	9.5%	207	9.3%	183	8.9%	-11.6%	-60.1%
Continuing	1,573	64.8%	1,722	65.9%	1,798	70.6%	1,590	65.9%	1,462	65.7%	1,329	64.5%	-9.1%	-15.5%
Transfer	40	1.6%	240	9.2%	272	10.7%	250	10.4%	265	11.9%	226	11.0%	-14.7%	465.0%
Readmit	354	14.6%	408	15.6%	236	9.3%	342	14.2%	290	13.0%	324	15.7%	11.7%	-8.5%
Other	3	0.1%	2	0.1%	0	0.0%	0	0.0%	0	0.0%	0	0.0%	-	-100.0%

Table 6a shows the distribution of degree seeking and non-degree seeking students by student status. The majority of students are degree seeking and continuing. The largest decrease in enrollment was among degree seeking continuing students. While non-degree seeking students decreased, there was an increase of non-degree seeking readmits.

Table 6a.

	Summer 2011		Summer 2012		Summer 2013		Summer 2014		Summer 2015		Summer 2016		1-Year Change	5-Year Change
	#	%	#	%	#	%	#	%	#	%	#	%		
Degree Seeking														
New	73	3.0%	98	3.7%	97	3.8%	89	3.7%	76	3.4%	81	3.6%	6.6%	11.0%
Continuing	1,499	61.7%	1,647	63.0%	1,707	67.0%	1,537	63.7%	1,390	62.5%	1,284	57.7%	-7.6%	-14.3%
Transfer	40	1.6%	43	1.6%	72	2.8%	78	3.2%	65	2.9%	70	3.1%	7.7%	75.0%
Readmit	208	8.6%	266	10.2%	163	6.4%	239	9.9%	215	9.7%	225	10.1%	4.7%	8.2%
Other	2	0.1%	0	0.0%	0	0.0%	0	0.0%	0	0.0%	0	0.0%	-	-
Non-Degree Seeking														
New	386	15.9%	145	5.5%	143	5.6%	140	5.8%	131	5.9%	102	4.6%	-22.1%	-73.6%
Continuing	74	3.0%	75	2.9%	91	3.6%	53	2.2%	72	3.2%	45	2.0%	-37.5%	-39.2%
Transfer	0	0.0%	197	7.5%	200	7.9%	172	7.1%	200	9.0%	156	7.0%	-22.0%	-
Readmit	146	6.0%	142	5.4%	73	2.9%	103	4.3%	75	3.4%	99	4.5%	32.0%	-32.2%
Other	1	0.0%	2	0.1%	0	0.0%	0	0.0%	0	0.0%	0	0.0%	-	-

Gender

Figure 3 and table 7 show distribution of enrolled students by gender.

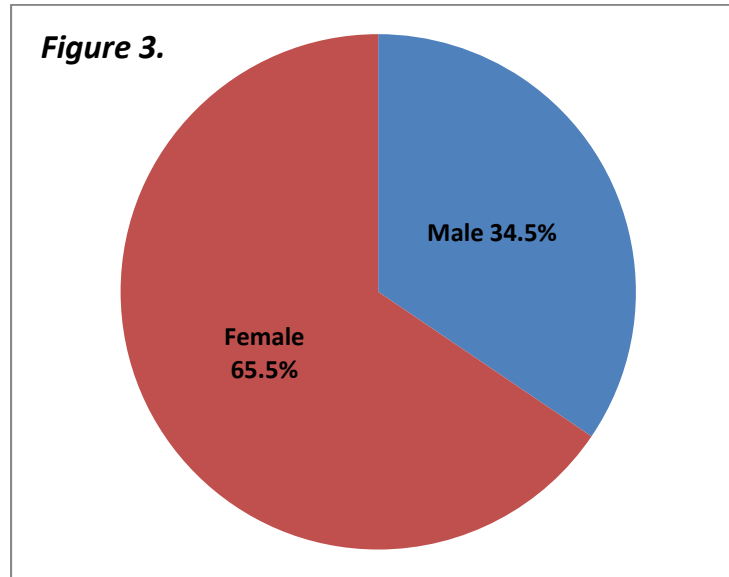


Table 7.

	Summer 2011		Summer 2012		Summer 2013		Summer 2014		Summer 2015		Summer 2016		1-Year Change	5-Year Change
	#	%	#	%	#	%	#	%	#	%	#	%		
Male	836	34.4%	899	34.4%	825	32.4%	830	34.4%	705	31.7%	711	34.5%	0.9%	-15.0%
Female	1,593	65.6%	1,716	65.6%	1,721	67.6%	1,581	65.6%	1,519	68.3%	1,351	65.5%	-11.1%	-15.2%

Age

Figure 4, figure 4a, and table 8 show the distribution of students enrolled in Summer 2016 by age.

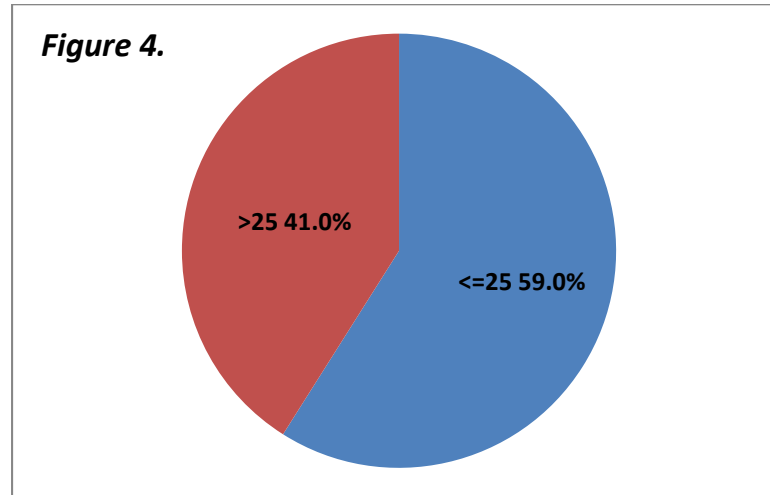
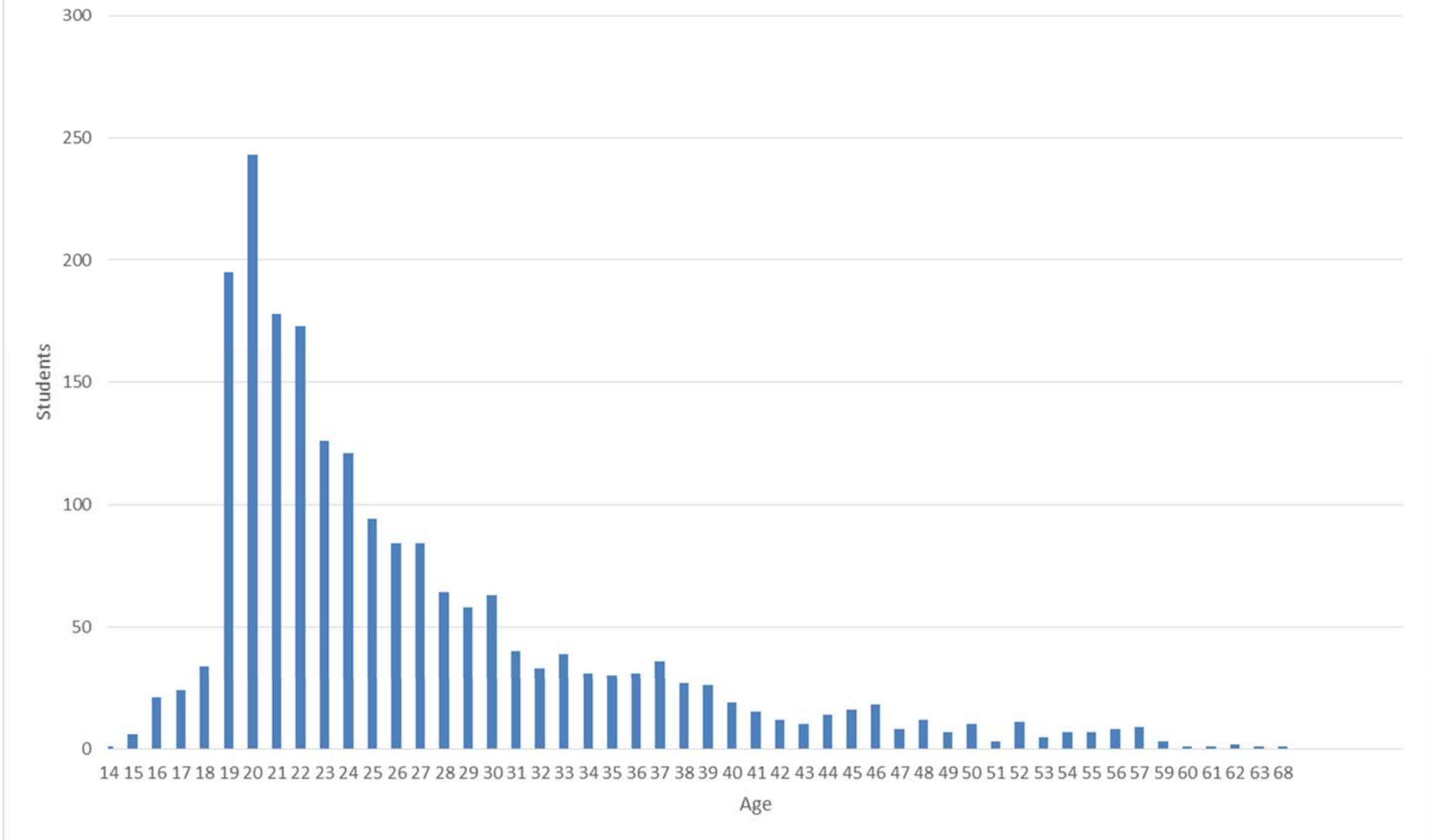


Table 8.

	Summer 2011		Summer 2012		Summer 2013		Summer 2014		Summer 2015		Summer 2016		1-Year Change	5-Year Change
	#	%	#	%	#	%	#	%	#	%	#	%		
<=25	1,331	54.8%	1,439	55.0%	1,480	58.1%	1,451	60.2%	1,347	60.6%	1,216	59.0%	-9.7%	-8.6%
>25	1,094	45.0%	1,174	44.9%	1,066	41.9%	960	39.8%	875	39.3%	846	41.0%	-3.3%	-22.7%
Unknown/Missing	4	0.2%	2	0.1%	0	0.0%	0	0.0%	2	0.1%	0	0.0%	-	-
													100.0%	100.0%

Figure 4a.
 Enrollment By Age
 NECC Summer 2016



The college-wide minimum age of Summer 2016 students is 14 and the maximum age is 68. Such a wide range may skew the mean (average) age, so the median (middle) and mode (most common) ages are reported in Table 9.

Table 9.

	Summer 2011	Summer 2012	Summer 2013	Summer 2014	Summer 2015	Summer 2016
Mean	28	29	28	27	27	27
Median	24	24	24	23	23	24
Mode	20	20	20	20	20	20

Table 9a shows the mean, median, and mode for age per each campus. Table 9a shows only Summer 2016 data.

Table 9a.

	NECC Wide	Haverhill	Lawrence	Lawrence Main	Lawrence iHealth	Lawrence River Walk	Lawrence Common St	Lawrence El-Hefni	WEBON	Other
Mean	27	25	29	29	-	28	-	29	27	29
Median	24	22	26	26	-	25	-	27	24	26
Mode	20	20	24	19	-	24	-	25	20	20

*Multiple modes exist; smallest value is displayed.

Ethnicity

Figure 5 and table 10 show the distribution of students enrolled in Summer 2016 by ethnicity. Majority is defined as White non-Hispanic ethnicity. Minority includes African-American/Black, Asian, Cape Verdean, Native Hawaiian/Pacific Islander, American Indian/Alaskan Native and Multi-Racial ethnicities.

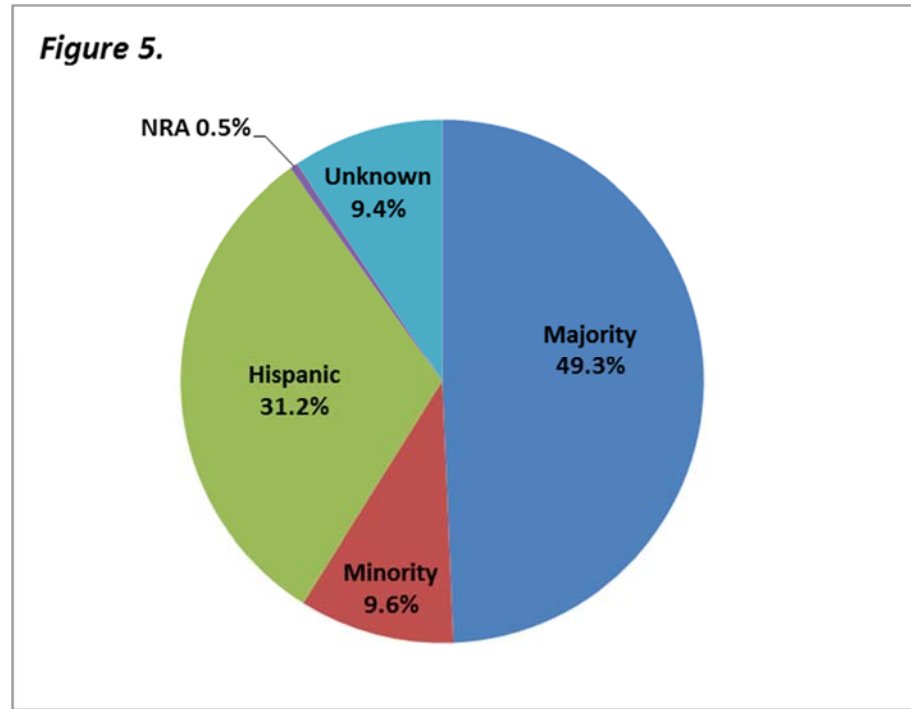


Table 10.

	Summer 2011		Summer 2012		Summer 2013		Summer 2014		Summer 2015		Summer 2016		1-Year Change	5-Year Change
	#	%	#	%	#	%	#	%	#	%	#	%		
Majority	1,441	59.3%	1,441	55.1%	1,421	55.8%	1,238	51.3%	1,151	51.8%	1,017	49.3%	-11.6%	-29.4%
Minority	171	7.0%	232	8.9%	218	8.6%	220	9.1%	209	9.4%	198	9.6%	-5.3%	15.8%
Hispanic	537	22.1%	699	26.7%	665	26.1%	720	29.9%	615	27.7%	644	31.2%	4.7%	19.9%
NRA	29	1.2%	12	0.5%	16	0.6%	14	0.6%	12	0.5%	10	0.5%	-16.7%	-65.5%
Unknown	251	10.3%	231	8.8%	226	8.9%	219	9.1%	237	10.7%	193	9.4%	-18.6%	-23.1%

Table 10a displays the enrollment where Minority is re-categorized into: African-American/Black, Asian, Cape Verdean, Native Hawaiian/Pacific Islander, American Indian/Alaskan Native and Multi-Racial ethnicities.

Table 10a.

	Summer 2011		Summer 2012		Summer 2013		Summer 2014		Summer 2015		Summer 2016		1-Year Change	5-Year Change
	#	%	#	%	#	%	#	%	#	%	#	%		
Asian	29	1.2%	45	1.7%	37	1.5%	58	2.4%	57	2.6%	63	3.1%	10.5%	117.2%
Black, non-Hispanic	101	4.2%	128	4.9%	126	4.9%	118	4.9%	107	4.8%	106	5.1%	-0.9%	5.0%
Hawaiian/Pacific Islander	20	0.8%	29	1.1%	22	0.9%	14	0.6%	13	0.6%	6	0.3%	-53.8%	-70.0%
Hispanic	537	22.1%	699	26.7%	665	26.1%	720	29.9%	615	27.7%	644	31.2%	4.7%	19.9%
Multi-Racial	13	0.5%	25	1.0%	31	1.2%	29	1.2%	23	1.0%	21	1.0%	-8.7%	61.5%
Native American	8	0.3%	5	0.2%	2	0.1%	1	0.0%	9	0.4%	2	0.1%	-77.8%	-75.0%
Non-Resident Alien	29	1.2%	12	0.5%	16	0.6%	14	0.6%	12	0.5%	10	0.5%	-16.7%	-65.5%
White, non-Hispanic	1,441	59.3%	1,441	55.1%	1,421	55.8%	1,238	51.3%	1,151	51.8%	1,017	49.3%	-11.6%	-29.4%
Unknown	251	10.3%	231	8.8%	226	8.9%	219	9.1%	237	10.7%	193	9.4%	-18.6%	-23.1%

Table 10b presents Ethnicity by campus. Only Summer 2016 data is shown below. For total headcount by campus of enrollment, please refer to Table 2.

Table 10b.

	NECC Wide		Haverhill		Lawrence		Lawrence Main		Lawrence iHealth		Lawrence River Walk		Lawrence Common St		Lawrence El-Hefni		WEBON		Other	
	#	%	#	%	#	%	#	%	#	%	#	%	#	%	#	%	#	%	#	%
Majority	1,017	49.3%	427	54.2%	244	35.1%	125	29.6%	0	-	23	32.4%	0	-	117	49.2%	541	55.5%	100	64.5%
Minority	198	9.6%	76	9.6%	72	10.3%	51	12.1%	0	-	5	7.0%	0	-	17	7.1%	92	9.4%	15	9.7%
Hispanic	644	31.2%	210	26.6%	327	47.0%	207	49.1%	0	-	35	49.3%	0	-	97	40.8%	249	25.6%	39	25.2%
NRA	10	0.5%	4	0.5%	6	0.9%	3	0.7%	0	-	1	1.4%	0	-	3	1.3%	3	0.3%	0	0.0%
Unknown	193	9.4%	71	9.0%	47	6.8%	36	8.5%	0	-	7	9.9%	0	-	4	1.7%	89	9.1%	1	0.6%

Table 10c displays the enrollment where Minority is re-categorized into: African-American/Black, Asian, Cape Verdean, Native Hawaiian/Pacific Islander, American Indian/Alaskan Native and Multi-Racial ethnicities.

Table 10c.

	NECC Wide		Haverhill		Lawrence		Lawrence Main		Lawrence iHealth		xLawrence River Walk		xLawrence Common St		xLawrence EI-Hefni		xWEBON		xOther	
	#	%	#	%	#	%	#	%	#	%	#	%	#	%	#	%	#	%	#	%
Asian	57	2.6%	27	3.4%	14	2.0%	10	2.4%	0	-	1	1.4%	0	-	3	1.3%	31	3.2%	6	3.9%
Black, non-Hispanic	107	4.8%	37	4.7%	50	7.2%	38	9.0%	0	-	1	1.4%	0	-	12	5.0%	47	4.8%	8	5.2%
Hawaiian/Pacific Islander	13	0.6%	2	0.3%	3	0.4%	0	0.0%	0	-	2	2.8%	0	-	1	0.4%	2	0.2%	0	0.0%
Hispanic	615	27.7%	210	26.6%	327	47.0%	207	49.1%	0	-	35	49.3%	0	-	97	40.8%	249	25.6%	39	25.2%
Multi-Racial	23	1.0%	8	1.0%	5	0.7%	3	0.7%	0	-	1	1.4%	0	-	1	0.4%	11	1.1%	1	0.6%
Native American	9	0.4%	2	0.3%	0	0.0%	0	0.0%	0	-	0	0.0%	0	-	0	0.0%	1	0.1%	0	0.0%
NRA	12	0.5%	4	0.5%	6	0.9%	3	0.7%	0	-	1	1.4%	0	-	3	1.3%	3	0.3%	0	0.0%
White	1,151	51.8%	427	54.2%	244	35.1%	125	29.6%	0	-	23	32.4%	0	-	117	49.2%	541	55.5%	100	64.5%
Unknown	237	10.7%	71	9.0%	47	6.8%	36	8.5%	0	-	7	9.9%	0	-	4	1.7%	89	9.1%	1	0.6%

Cities & Towns of Residence

Table 11 shows the top 10 cities and towns of residence which account for 73.9% of NECC’s Summer 2016 student population. The top 3 cities account for 53.7% of NECC’s Summer 2016 student population.

Table 11.

Rank	City	Summer 2011	Summer 2012	Summer 2013	Summer 2014	Summer 2015	Summer 2016		1-Yr Change	5-Yr Change
1	Lawrence	454	545	497	571	458	468	21.0%	2.2%	3.1%
2	Haverhill (Bradford & Ward Hill)	418	465	484	457	406	380	17.1%	-6.4%	-9.1%
3	Methuen	291	307	300	262	267	259	11.6%	-3.0%	-11.0%
4	North Andover	108	124	113	99	79	73	3.3%	-7.6%	-32.4%
5	Amesbury	92	82	90	79	78	71	3.2%	-9.0%	-22.8%
6	Lowell	54	80	60	66	54	69	3.1%	27.8%	27.8%
7	Salem & North Salem, NH	73	89	91	89	76	65	2.9%	-14.5%	-11.0%
8	Andover	84	92	81	77	69	61	2.7%	-11.6%	-27.4%
9	Newburyport	51	48	53	46	46	45	2.0%	-2.2%	-11.8%
10	Salisbury	34	48	30	25	38	33	1.5%	-13.2%	-2.9%
	All Other Municipalities	770	735	747	670	653	538	24.2%	-17.6%	-30.1%

State of Residence

Table 12 shows the state of residence of NECC’s Summer 2016 student population. Most of NECC students claim Massachusetts as their state of residence, and New Hampshire ranks second in this category. For Summer 2016 the other states are: Maine, and California.

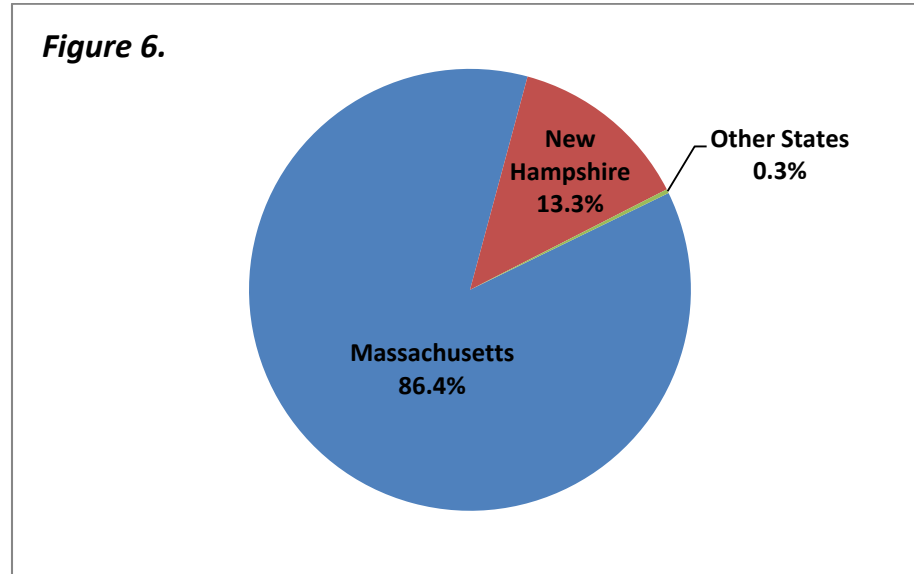


Table 12.

	Summer 2011	Summer 2012	Summer 2013	Summer 2014	Summer 2015	Summer 2016	1-Yr Change	5-Yr Change	
Massachusetts	1,984	2,185	2,104	2,035	1,868	1,782	86.4%	-4.6%	-10.2%
New Hampshire	416	424	434	369	343	274	13.3%	-20.1%	-34.1%
Other States	29	6	8	7	13	6	0.3%	-53.8%	-79.3%

State of Residence – Web Only Students

Table 13 shows the state residence of NECC’s Summer 2016 student population who took Web Only courses. Most of NECC students who took Web Only courses claim Massachusetts as their state of residence, and New Hampshire ranks second in this category. For Summer 2016 the other states are: Maine and California.

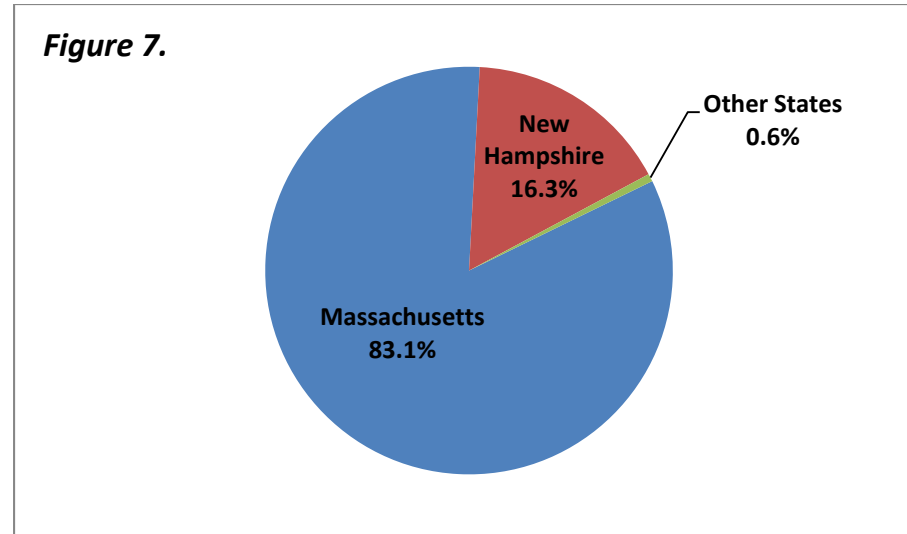


Table 13.

	Summer 2011	Summer 2012	Summer 2013	Summer 2014	Summer 2015	Summer 2016		1-Yr Change	5-Yr Change
Massachusetts	731	807	769	749	774	809	83.1%	4.5%	10.7%
New Hampshire	191	155	195	173	165	159	16.3%	-3.6%	-16.8%
Other States	16	3	8	4	7	6	0.6%	-14.3%	-62.5%

Programs of Study

The 10 largest programs of study/classifications, as displayed in Table 14, account for 52.2% of NECC's Summer 2016 enrollment.

Table 14.

Rank	Major	Major Code	Summer 2011	Summer 2012	Summer 2013	Summer 2014	Summer 2015	Summer 2016	1-Yr Change	5-Yr Change
1	General Studies: Health Specialization	8107	-	-	328	423	424	419	-1.2%	-
2	Liberal Arts	0100	85	120	94	79	119	132	10.9%	55.3%
3	Business Transfer	0311	103	123	128	111	116	126	8.6%	22.3%
4	Business Management	0308	67	77	90	96	82	78	-4.9%	16.4%
5	LA: Psychology	0137	51	48	61	50	71	65	-8.5%	27.5%
6	Engineering Science	0507	61	87	86	79	77	65	-15.6%	6.6%
7	Criminal Justice	0200	87	83	81	80	75	61	-18.7%	-29.9%
8	CIS: Information Technology	0559	48	57	55	36	37	47	27.0%	-2.1%
9	Early Childhood Education	0201	69	76	70	77	59	43	-27.1%	-37.7%
10	CIS: Transfer Option	0565	-	7	24	21	33	40	21.2%	-

Enrollment

Table 15 provides a complete list of programs/classifications and the number of students enrolled in Summer 2016.

Table 15.

Major Code	Major	Summer 2016
0100	Liberal Arts	132
0113	LA: Theater	5
0121	LA: Political Science	4
0122	LA: History	5
0131	LA: Biology	6
0134	LA: Writing	5
0136	Biology	39
0137	LA: Psychology	65
0143	LA: Philosophy	3
0144	Paralegal Career	3
0145	Paralegal Transfer	1
0147	Elementary Education	23
0149	LA: Journalism/Communication	18
0156	LA: Physical Sciences Option	5
0179	GS: Movement Science Option	18
0180	General Studies	10
0193	General Studies: Music Option	6
0197	LA: Middle/HS Teaching Option	11
0199	General Studies: Art	36
0200	Criminal Justice	61
0201	Early Childhood Education	43
0209	Practical Nursing (PN)	29
0212	Radiologic Technology	13
0213	Nursing (ADN) Day	13
0214	Respiratory Care	16
0217	Alcohol Drug Abuse Counseling	2
0218	Dental Assisting	2
0239	Law Enforcement Cert	1
0254	Paramedic Technology Cert	12
0255	Human Services	24
0256	Paramedic (EMT-P) Technology	4
0260	Medical Assistant (Day)	6
0262	Community Support Human Svs	3
0264	Sleep Technologist	1
0266	DS: Interpreting Transfer	3
0267	Deaf Studies	2

0269	GS: Individualized Option	21
0293	Healthcare Technician Cert	33
0300	Accounting	26
0308	Business Management	78
0311	Business Transfer	126
0336	Health Information Technology	4
0343	Bus Mgt: Hospitality Option	1
0347	Medical Billing Cert (IH)	6
0372	Bus Mgt: Computer Applications	10
0507	Engineering Science	65
0521	Computer Aided Drafting	1
0529	Electronic Equipment Tech Cert	1
0535	Computer Applications Cert	2
0539	Web Page Design & Development	1
0544	Computer Networking Cert	2
0559	CIS: Information Technology	47
0563	CIS: Applications Option	2
0564	Computer Forensics Basic Cert	1
0565	CIS: Transfer Option	40
0567	Computer Security Cert	1
0568	Engineering Science Techn Opt	4
0572	Help Desk Cert	1
0574	Laboratory Science	19
0662	Direct Support	1
0663	Direct Support Cert	6
0994	Unclassified -Home Schooled	1
0995	Unclassified -High School	53
0996	Unclassified -Former Graduate	16
0998	Unclassified -No Matriculate	314
0999	Unclassified -Major Undeclared	18
7245	Gen Studies: Deaf Studies	5
7255	Gen Studies: Human Services	18
8100	Medical Coding	13
8101	Medical Office Assistant Cert	2
8102	Bus Mgt: Healthcare Practice	26
8103	Medical Assistant	14
8105	Medical Laboratory Technology	23
8106	Ophthalmic Assistant Cert	5
8107	GS: Health Specialization	419
8108	Elec Health Record Spec Cert	6

Credits Generated by Discipline

Table 16 provides a complete list of disciplines and the total credits generated for Summer 2016.

Table 16.

Department		Discipline	Total Credits
Math	MAT	Math	1,118
Natural Sciences	BIO	Biology	1,526
	CHM	Chemistry	380
	ERS	Earth Science	44
	SCI	Science	147
Academic Preparation	CSS	College Success	0
	DHH	Deaf & Hard of Hearing	0
	ESL	English as a Second Language	282
	MAT	Math	438
	REA	Reading	75
	RWR	Reading, Writing, And Reasoning	0
	WRT	Writing	126
	FYS	First Year Seminar	57
English	COM	Communications	279
	ENG	English	699
	JRN	Journalism	0
	LIT	Literature	360
Behavioral Sciences	ANT	Anthropology	135
	PSY	Psychology	561
	SOC	Sociology	429
Global Studies	CHN	Chinese	0
	ECO	Economics	231
	FRN	French	0
	GEO	Geography	0
	GER	German	0
	GOV	Government	111
	HIS	History	273
	ITN	Italian	6
	LHU	Liberal Arts/Humanities	0
	PHI	Philosophy	255
	REL	Religion	42
	SPN	Spanish	57
Health	CLS	Clinical Lab Science	137

	CTA	Computed Tomography	0
	CVT	Electrocardiography	45
	DAS	Dental Assistant	0
	EMT	Emergency Medical Technician	141
	GRN	Gerontology	0
	HES	Health Sciences	509
	MAS	Medical Assistant	84
	MRT	Medical Records Technology	44
	NUR	Registered Nursing	13
	OPT	Ophthalmic Assistant	10
	PED	Physical Education/Sport & Leisure Studies	4
	PNS	Practical Nursing	319
	PSG	Polysomnography	0
	RSC	Respiratory Care	67
	RTA	Radiologic Technology	78
Art & Design	ART	Art	13
	GRA	Graphic Design	0
Computer Information Science	CIS	Computer Information Sciences	591
	CTN	Computer Technology Hardware & Networking	51
Engineering/Physics	CTE	Computer Technology Electronics	0
	EST	Engineering Science & Technology	0
	PHS	Physics	0
Other	CLL	Credit for Lifelong Learning	0
	COP	Cooperative Education	0
	HON	Honors	0
	LHU	Liberal Arts/Humanities	0
	OPN	AF ROTC Foundations of USAF	0
Performing Arts	DAN	Dance	0
	MUS	Music	0
	THE	Theater	0
Business	ACC	Accounting	246
	BUS	Business	99
	FIN	Finance	0
	HST	Hospitality & Tourism	0
	MGT	Management	81
	MKT	Marketing	69
	TLT	Travel & Tourism	0

Criminal Justice	CRJ	Criminal Justice	0
Deaf Studies	ASL	American Sign Language	44
	DST	Deaf Studies	0
Education	ECE	Early Childhood Education	159
	EDU	Education	0
Human Services	HUS	Human Services	39
Paralegal	PAR	Paralegal	0
TOTAL			10,474