

Achieving the Dream Report Series



December 29, 2009

A Comparative Analysis on the Effect of Gender on Course Completion Rates For Developmental and Gatekeeper Courses

This AtD report provides an updated look at our previous analysis of the effect of gender on course completion rates for developmental and “gatekeeper” courses. In this report all 5 years of AtD cohort data are compared. The cohorts include all degree-seeking students who are first-timers to NECC. In terms of course completion, “success” is defined by a final grade of C or better (C- is excluded).

Overall, female students complete course work more successfully than male students with a few exceptions: male students completed developmental Math (MAT 022) in Fall 2004, developmental Reading (REA 021) in Fall 2007, English Comp (ENG 101) in Fall 2006 and gatekeeper science (BIO 103, 121 or 122) more successfully in Fall 2007.

In comparing the two most recent years of data, the highest level of improvement among NECC’s male students was observed in Basic Writing (WRT 010) where a 13% increase occurred. College-level Math (MAT 120 or 130) and English Comp. (ENG 101) also present increased success between Fall 2007 and Fall 2008, 8% and 1% respectively.

Female not only completed developmental and gatekeeper courses with more success than their male counterparts overall, they also experienced a greater level of increase in successful completion

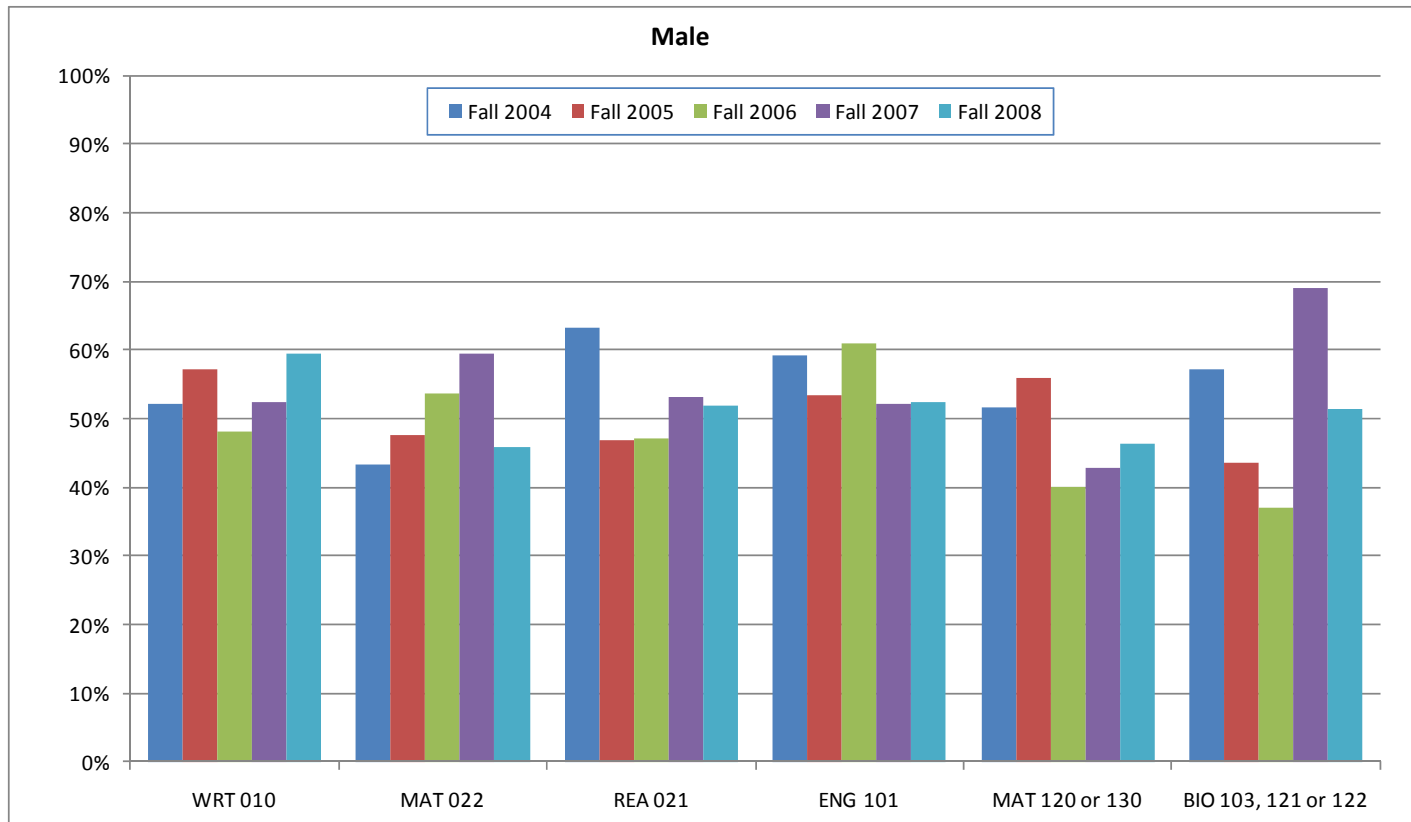
rates. In the last 2 years, the completion rates for female students increased in English Comp. (ENG 101, 15%), Basic Writing (WRT 010, 14%), gatekeeper Science (BIO 103, 121 or 122, 5%) and developmental Math (MAT 022, 3%).

Interpretations of these findings as well as suggestions for further analysis are always welcome. Please direct questions and comments to Thomas Fallon, Dean of Institutional Research and Planning, via phone at 978-556-3866 or email at tfallon@necc.mass.edu.

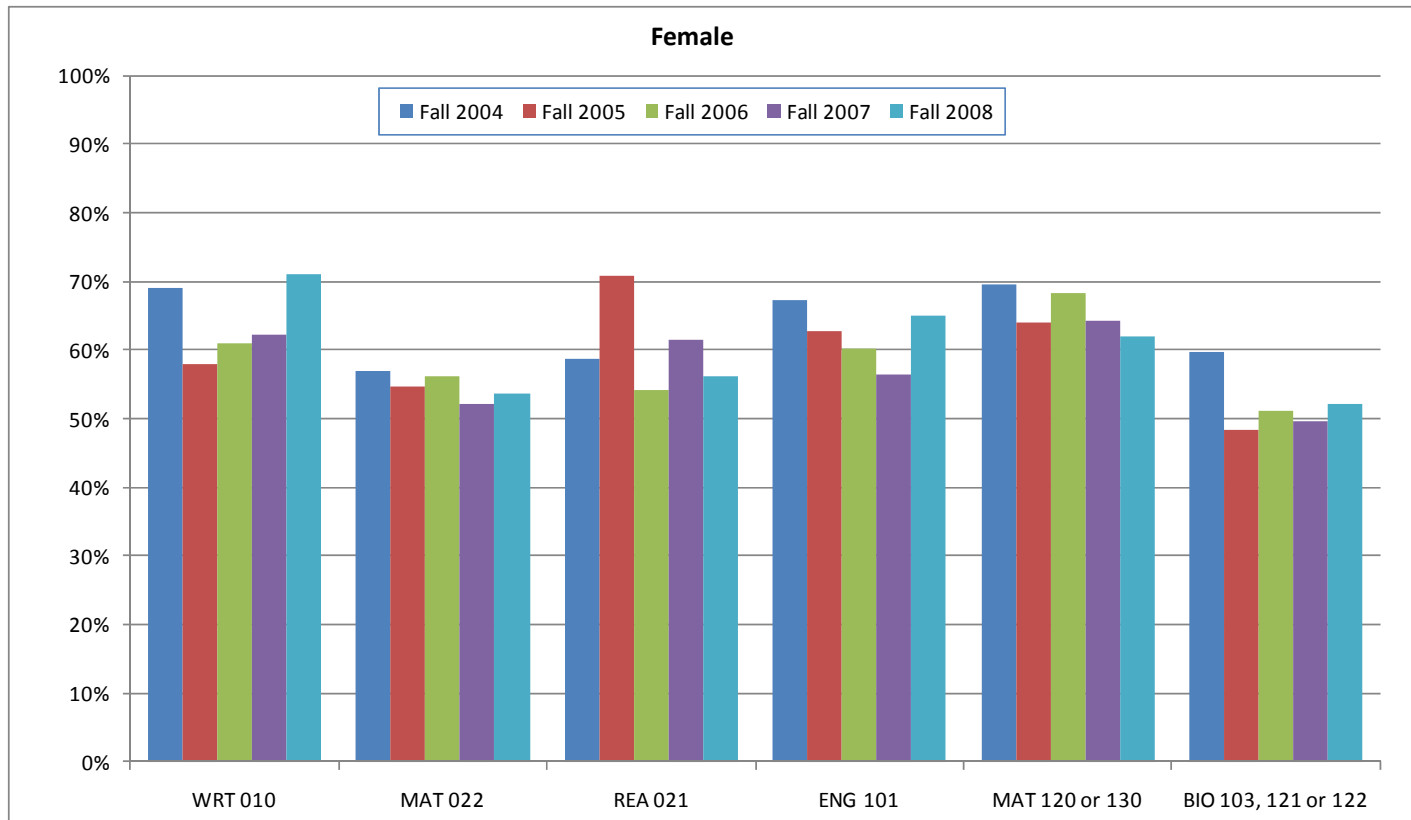


<http://www.necc.mass.edu/irp/planning/dream.php>

Course Completion Rates by Gender (Grades A-C, C- is excluded)
Fall 2004 – Fall 2008



	Fall 2004		Fall 2005		Fall 2006		Fall 2007		Fall 2008		1 Year
	# Enrolled	% Complete	# Enrolled	% Complete	# Enrolled	% Complete	# Enrolled	% Complete	# Enrolled	% Complete	Change
WRT 010	92	52%	110	57%	131	48%	145	52%	182	59%	13%
MAT 022	185	43%	252	48%	240	54%	227	59%	238	46%	-23%
REA 021	57	63%	49	47%	53	47%	66	53%	50	52%	-2%
ENG 101	218	59%	283	53%	248	61%	265	52%	227	52%	1%
MAT 120 or 130	29	52%	34	56%	15	40%	28	43%	28	46%	8%
BIO 103, 121 or 122	21	57%	23	43%	27	37%	29	69%	35	51%	-25%



	Fall 2004		Fall 2005		Fall 2006		Fall 2007		Fall 2008		<u>1 Year</u>
	# Enrolled	% Complete	# Enrolled	% Complete	# Enrolled	% Complete	# Enrolled	% Complete	# Enrolled	% Complete	Change
WRT 010	110	69%	114	58%	146	61%	151	62%	224	71%	14%
MAT 022	195	57%	243	55%	278	56%	278	52%	309	54%	3%
REA 021	63	59%	75	71%	74	54%	91	62%	96	56%	-9%
ENG 101	269	67%	288	63%	305	60%	278	56%	285	65%	15%
MAT 120 or 130	23	70%	25	64%	22	68%	14	64%	21	62%	-4%
BIO 103, 121 or 122	102	60%	99	48%	88	51%	101	50%	90	52%	5%